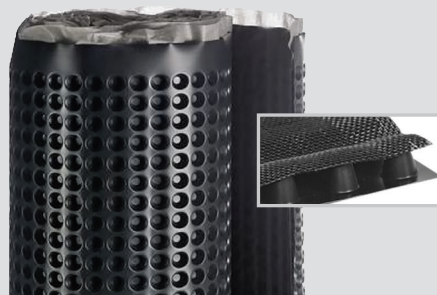


SOPRADRAIN™ 104

High-Strength, High-Flow Drainage System



APPLICATIONS

WATERPROOFING

VEGETATED

PRODUCT DATA SHEET PDS10335 - REV 240122

PRODUCT NUMBERS:

- W889 - **SOPRADRAIN 104** - woven filter fabric and polyethylene core
- W814 - **SOPRADRAIN 104PF** - woven filter fabric and polyethylene core with a protective polymeric film

DESCRIPTION & FEATURES:

SOPRADRAIN 104 and **SOPRADRAIN 104PF** are versatile workhorses that deliver first-rate protection for waterproofing systems. Faced with a woven fabric layer, these high-density drainage panels filter out dirt and sand particles to provide free-flowing drainage. Controlling the flow of hydrostatic water pressure creates dryer, lighter soil loads reducing stress on walls, floors, and waterproofing membranes. Engineered for heavy-duty applications, **SOPRADRAIN 104** can serve as a drainage layer for parking decks, split slabs, and plaza decks. **SOPRADRAIN 104** is also available as **SOPRADRAIN 104PF**, which has a polymeric film on the back side to protect your waterproofing membranes.

- Combines drainage, protection and filtration in one product
- Easily conforms to irregular shapes and corners
- Lightweight and easy to handle
- Provides a thin profile for tight construction assemblies

APPLICATION:

Unroll **SOPRADRAIN 104** and cut to desired length. Ensure fabric is adhered at all joints and fold any excess fabric at ends under the core.

Refer to SOPREMA's published technical literature for additional details and application requirements.

STORAGE:

Store rolls in an upright position to prevent damage and do not double stack pallets. Store in a clean, dry location and cover as necessary to protect from environmental damage such as extreme cold, heat or moisture. Ballast down during installation to prevent loss of product.

WARRANTY:

For more information refer to www.SOPREMA.us or contact your SOPREMA representative.

SUSTAINABILITY



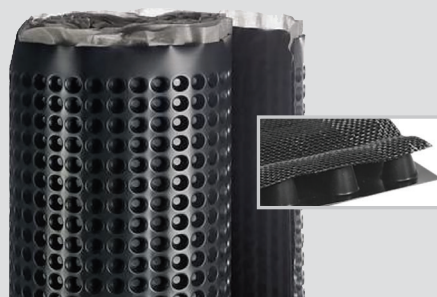
RECYCLED CONTENT
POST-CONSUMER

50%



SOPRADRAIN™ 104

High-Strength, High-Flow Drainage System



APPLICATIONS

WATERPROOFING

VEGETATED

PRODUCT DATA SHEET PDS10335 - REV 240122

TECHNICAL INFORMATION & TESTING:

DRAINAGE CORE		
PROPERTY	VALUE	ASTM
Material	Polypropylene	-
Thickness , in (mm)	0.40 (10.16)	D1777
Compressive strength , psf (kPa) ²	>21,000 (1005.0)	D1621
Flow capacity , gal/min/ft (l/min/m)	23 (286)	D4716

FILTER FABRIC		
PROPERTY	VALUE	ASTM
Material	Polypropylene	-
Grab strength , lb	370 (1.6447)	D4632
Flow rate , gal/min/ft ² (l/min/m ²)	60.0 (2460.0)	D4491

DIMENSION & MASS	
PROPERTY	VALUE
Length , ft (m)	50 (15.24)
Width , ft (m)	4 (1.22)
Coverage , ft ² (m ²)	200 (18.6)
Roll weight , lb (kg)	38 (17)
Rolls per pallet	7

Data is represented by average values, unless noted otherwise.