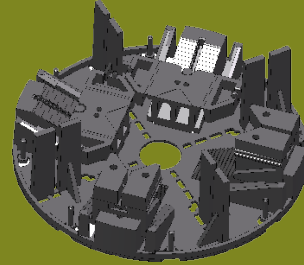


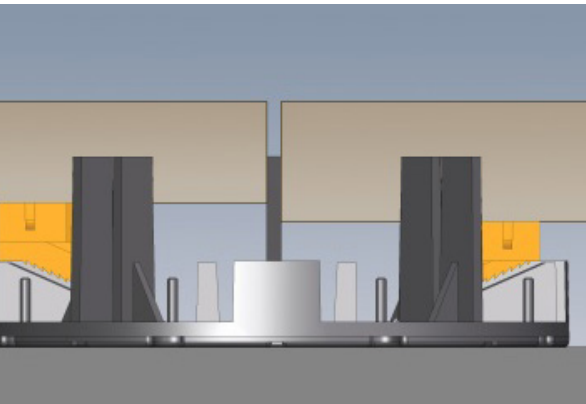


VEGETATED

SOPRANATURE VERSIPAVE®



PAVER SUPPORT



VersiPave® is an innovative paver pedestal offering solutions to a variety of challenging installation details. Its height range of 1" - 1.75" (24mm - 45mm) can be raised in increments of 0.75" (20mm) and/or 1.50" (40mm) with stacking VersiPave Extenders.

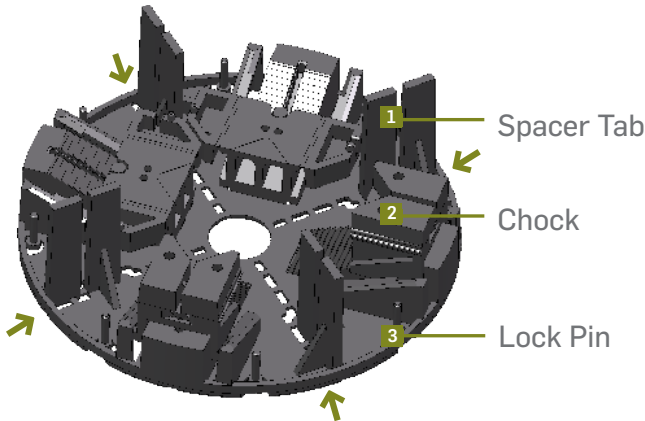
Each VersiPave® pedestal has 4 individually adjustable chocks, allowing pavers of multiple thicknesses to be precisely installed at one finished height. Finally, the ability of VersiPave® to be separated into halves or quarters, enables flush placement along wall edges and also around or into corners.

BENEFITS

- Accommodates pavers of inconsistent thickness
- Snaps into halves or quarters for use at curbs and parapets
- Minimum height of 1 in (24 mm)
- Progressive 0.04 in (1 mm) height adjustment
- Easy to install and lightweight
- Made from recycled plastics
- Reduces construction time



VERSIHAVE PEDESTAL



1 SPACER TAB

Spacer tabs with thickness from 0.1 in to 0.4 in (2mm to 10mm) cater for different gap sizes between pavers.

2 CHOCK

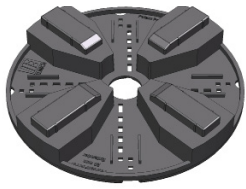
Allows for compensation for differences in paver thickness.

3 LOCK PIN

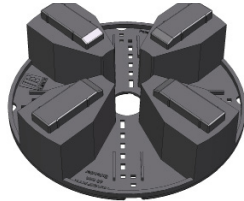
Lock pin prevents accidental movement of chocks after height is set.

Sectioned design feature will separate along lines for various applications.

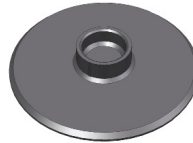
ACCESSORIES



W958
VersiPave® extender
20mm

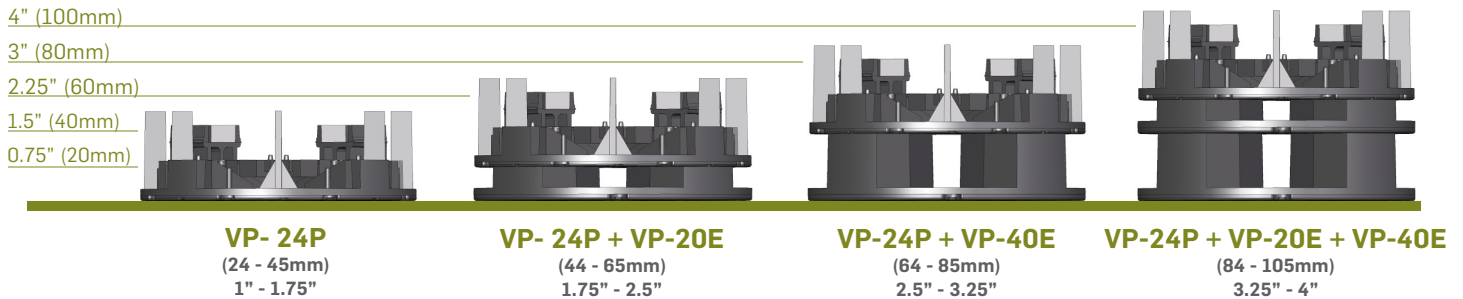


W959
VersiPave® extender
40mm



W969 Joiner
(Allows placement of
VersiPave® on VersiJack® or
SpiraPave® pedestals)

VersiPave® Height Chart



(Note: All dimensions are nominal.)

If you have any questions about this product or its installation, please contact your SOPREMA representative.

