

EXISTING CAST WINDOW SILL ABOVE TO REMAIN (TYP.)

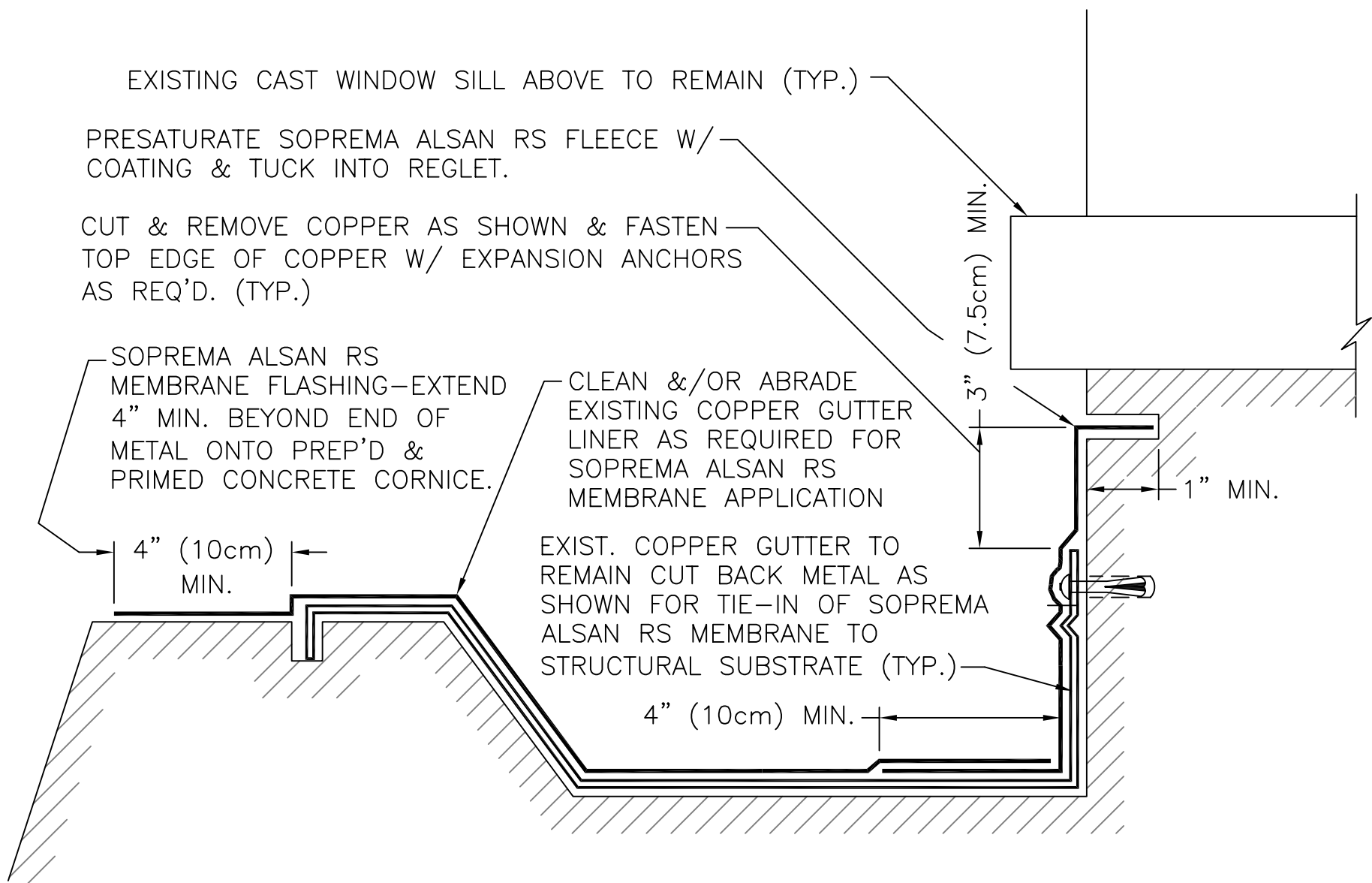
PRESATURATE SOPREMA ALSAN RS FLEECE W/  
COATING & TUCK INTO REGLET.

CUT & REMOVE COPPER AS SHOWN & FASTEN  
TOP EDGE OF COPPER W/ EXPANSION ANCHORS  
AS REQ'D. (TYP.)

SOPREMA ALSAN RS  
MEMBRANE FLASHING—EXTEND  
4" MIN. BEYOND END OF  
METAL ONTO PREP'D &  
PRIMED CONCRETE CORNICE.


CLEAN &/OR ABRABE  
EXISTING COPPER GUTTER  
LINER AS REQUIRED FOR  
SOPREMA ALSAN RS  
MEMBRANE APPLICATION

EXIST. COPPER GUTTER TO  
REMAIN CUT BACK METAL AS  
SHOWN FOR TIE-IN OF SOPREMA  
ALSAN RS MEMBRANE TO  
STRUCTURAL SUBSTRATE (TYP.)



NOTES:

1. DETAIL TO BE USED IN CONJUNCTION WITH SOPREMA GENERAL REQUIREMENTS, APPLICATION METHODS AND APPROVED DETAILS.
2. PRIME COPPER GUTTER WHERE REQUIRED. SOPREMA ALSAN RS PRIMER REQUIRED ON ALL CONCRETE, MASONRY & STONE SUBSTRATES.

		310 QUADRAL DRIVE WADSWORTH, OHIO 44281 (330) 334-0066	
		TITLE <b>CORNICE GUTTER FLASHING</b>	
SCALE	DWN	CHK	APPROVAL DATE
NONE	DMT	MT	3/20/07
DRAWING NUMBER			REV
E-4a-RS			0

\*\* USAGE OF THIS DRAWING IS GOVERNED BY THE TERMS OF SERVICE FOR SOPREMA DETAIL. PLEASE CONSULT THESE TERMS OF SERVICE PRIOR TO UTILIZING THIS DRAWING.