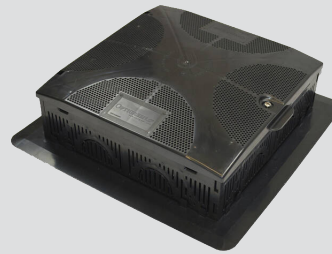


SOPRANATURE[®] DRAIN BOX

Recycled ABS Drain Cover and Protector



APPLICATIONS

VEGETATED

PRODUCT DATA SHEET PDS10337 - REV 230322

PRODUCT NUMBERS:

- W856 - 14.5 x 14.5 in (36.83 x 36.83 cm) - Box

DESCRIPTION & FEATURES:

Manufactured from recycled acrylonitrile-butadiene-styrene (ABS) with narrow slots on the sidewalls and small holes on the top cover, **SOPRANATURE DRAIN BOX** blocks debris while allowing continuous water flow to roof drains. A 12 in opening provides unobstructed drain access, and wide bottom extensions ensure the drain box will not float during times of high water intake. **SOPRANATURE DRAIN BOX** comes in a standard 4 in height that can extend up to 32 in with extension kits.

APPLICATION:

Interlock sidewall panels at each corner and stagger horizontal joints. Connect sidewalls to the bottom plate and top cover. Assemblies measuring over 16 in high must be screwed together. Refer to the diagram shown on the right.

Refer to SOPREMA's published technical literature for additional details and application requirements.

STORAGE:

Store in a clean, dry location and cover as necessary to protect from environmental damage such as extreme cold, heat or moisture.

WARRANTY:

For more information refer to www.SOPREMA.us or contact your SOPREMA representative.

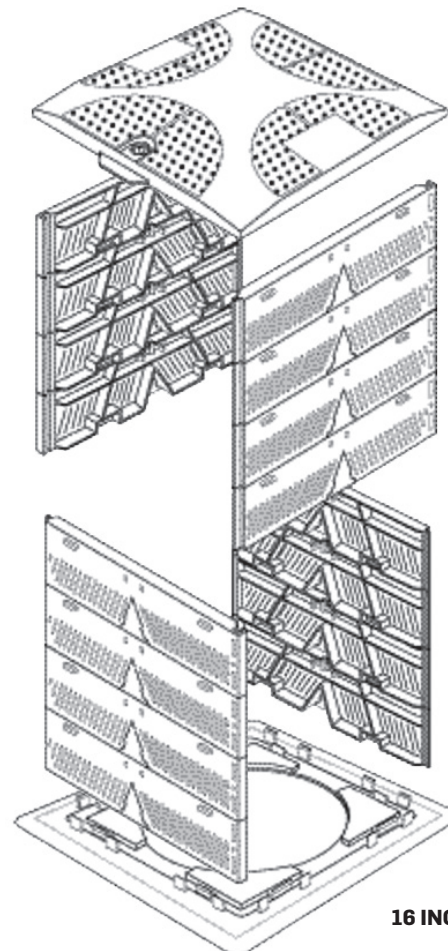
SUSTAINABILITY:



RECYCLED CONTENT
POST-CONSUMER

100%

DETAIL:

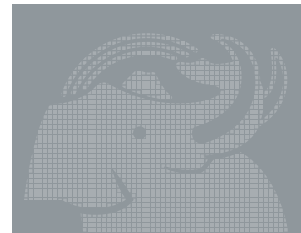
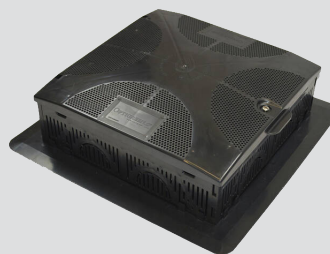


16 INCH DRAIN BOX



SOPRANATURE® DRAIN BOX

Recycled ABS Drain Cover and Protector



APPLICATIONS

VEGETATED

PRODUCT DATA SHEET PDS10337 - REV 230322

TECHNICAL INFORMATION & TESTING:

DRAIN BOX	
PROPERTY	VALUE
Material	Black recycled ABS
Length, in (cm)	14.5 (36.83)
Width, in (cm)	14.5 (36.83)
Height, in (cm)	4.0 (10.16)

EXTENSION KIT	
PROPERTY	VALUE
Material	Black recycled ABS
Width, in (cm)	14.5 (36.83)
Height, in (cm)	4.0 (10.16)