



ACCESSORY
PRODUCTS

DUOTACK® SPF ADHESIVE ROOFING



SPRAY POLYURETHANE FOAM ADHESIVE



DUOTACK SPF Adhesive is a low pressure, two-component spray polyurethane foam adhesive specially formulated by SOPREMA for adhering SENTINEL HFB PVC membranes to approved substrates as well as a ribbon applied adhesive for adhering insulation and coverboards to approved substrates or together. Backed by the proven DUOTACK formulation as the base, DUOTACK SPF Adhesive was developed by SOPREMA chemists with vast knowledge and experience in the roofing and polyurethane foam industry.

- 50% more coverage than the competition (up to 30 squares of coverage per kit)
- Faster flow rate than the competition, allowing for faster installation, time and labor savings
- Multiple applications in one portable, easy-to-use disposable kit, eliminating the need for multiple inventory and expensive equipment
- Developed by industry expert chemists at SOPREMA for excellent performance in conjunction with roofing materials

RELATED PRODUCTS

SENTINEL® HFB

High performance, polyester reinforced, thermoplastic polyvinyl chloride (PVC) roof membrane with a heavy fleece-backed underside

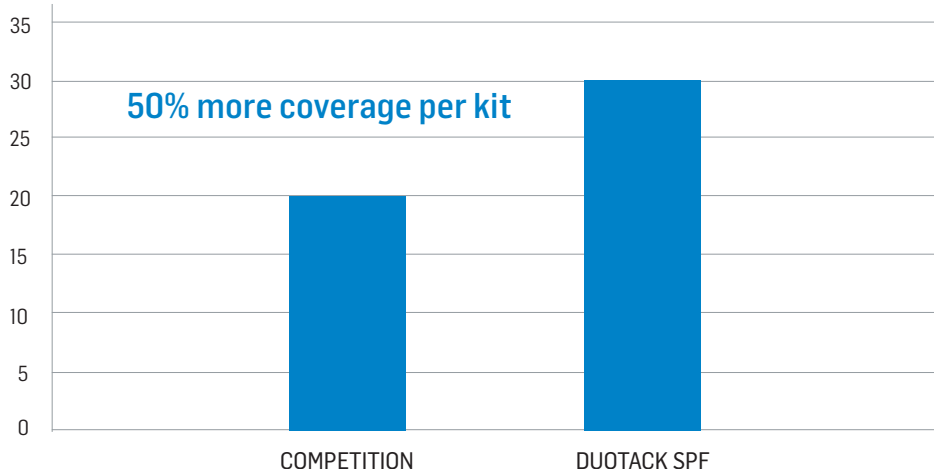
SOPRA-ISO®

Rigid polyisocyanurate thermal insulation panel for use in approved multi-ply membrane and flashing assemblies

SOPRASMART®

SBS-base ply factory laminated to various roof cover boards utilizing DUO SELVEDGE™ technology

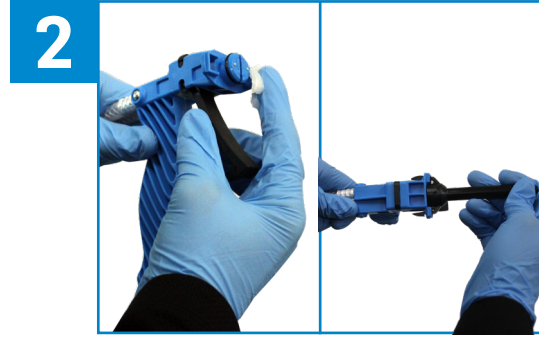
COVERAGE - SQUARES PER KIT



INSTALLATION INSTRUCTIONS



Attach A-side and B-side hoses and tighten with a wrench. Shake both tanks. Open valves fully and check flow by pulling the trigger and dispensing into a waste container before attaching a nozzle.



Apply a petroleum jelly to the ring around the gun face. Line up the nozzle and push firmly to attach. Prior to use condition product between 70°F and 90°F (21°C - 32°C).



SENTINEL HFB adhesive application:

Holding the dispensing gun 3-4 feet above the approved substrate, spray adhesive in an even coverage pattern. Replace PVC membrane and apply pressure using a weighted roller or push broom to ensure complete adhesion and prevent wrinkles or air bubbles.



Insulation adhesive application:

Holding the dispensing gun no further than 2 feet above the approved deck or insulation substrate, spray adhesive in a ribbon application. Once applied, immediately place the insulation/coverboard into the wet adhesive and do not allow the adhesive to skin over.

COMPATIBLE MATERIALS

ROOF DECKS & SUBSTRATES	INSULATION & COVERBOARDS
<ul style="list-style-type: none"> • Structural concrete • Lightweight insulating concrete • Lightweight structural concrete • Gypsum decks • Steel - minimum 22 gauge • Wood (plywood or OSB) • SBS-modified base sheets • Existing modified bitumen or smooth Built-up roof (BUR) 	<ul style="list-style-type: none"> • SOPRABOARD™ • Polyisocyanurate – paper face and coated glass • High density woodfiber • DensDeck® or other approved gypsum boards • Securock®

If you have any questions about this product or its installation, please contact your SOPREMA representative.

