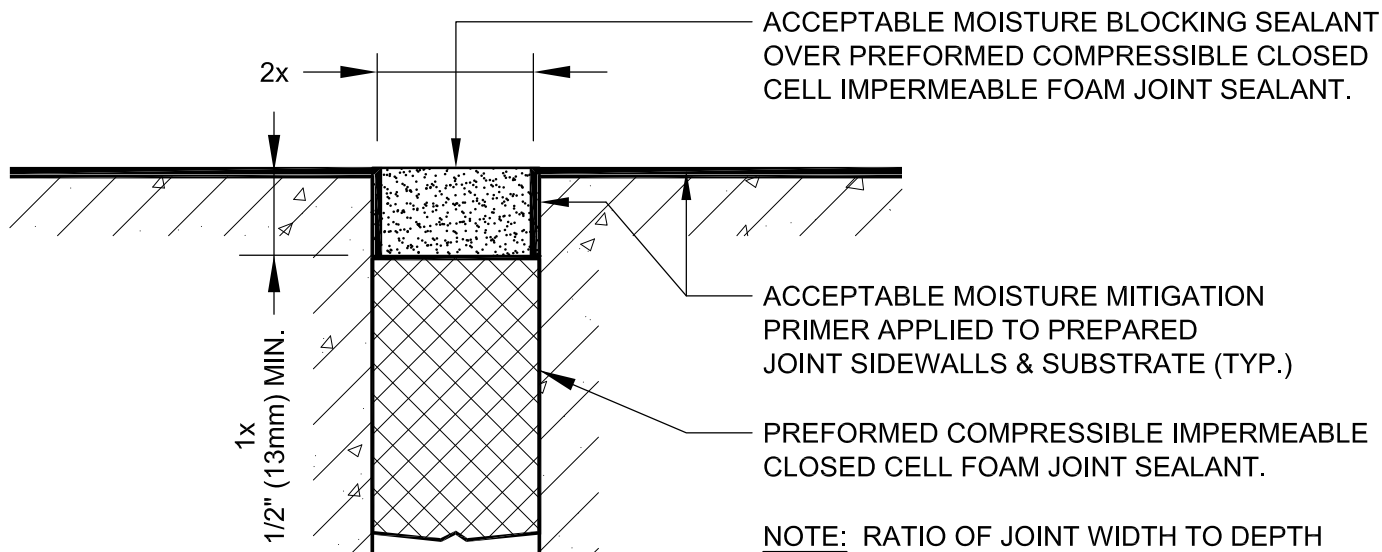


NOTE: MOISTURE BLOCKING SEALANT MUST BE 1/2" (13mm) MIN. DEPTH FOR ALL JOINTS.

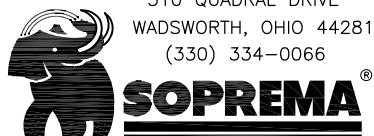
EXPANSION JOINTS UP TO 1/2" WIDTH



NOTE: RATIO OF JOINT WIDTH TO DEPTH MUST BE 2:1 FOR ALL JOINTS GREATER THAN 1/2" IN WIDTH. MOISTURE BLOCKING SEALANT MUST BE 1/2" (13mm) MIN. DEPTH.

EXPANSION JOINT 1/2" to 2" MAXIMUM WIDTH

NOTE: REFER TO SOPREMA RELATED PUBLISHED DOCUMENTATION, PRODUCT DATA SHEETS (PDS) & SAFETY DATA SHEETS (SDS) FOR ADDITIONAL INFORMATION. ALL DETAIL DRAWINGS & RELATED INSTALLATION GUIDELINES ARE PROVIDED BY SOPREMA FOR THE SOLE PURPOSE OF SOPREMA WARRANTY QUALIFICATION. ACCORDINGLY, ANY DETAILS DRAWINGS PROVIDED ARE NOT OFFERED AND SHOULD NOT BE CONSIDERED A SUBSTITUTE FOR PROFESSIONAL DESIGN SERVICES. USAGE OF THIS DRAWING IS GOVERNED BY THE TERMS OF SERVICE FOR SOPREMA DETAIL, PLEASE CONSULT THESE TERMS OF SERVICE PRIOR TO UTILIZING THIS DRAWING.



MOISTURE MITIGATION PRIMER JOINT TREATMENT

DRAWING NO.:
RS-J1G

REVISION

0

ISSUE DATE

12-15-2018

SCALE

N.T.S.

DRAWN BY

DRW

RS_J01G