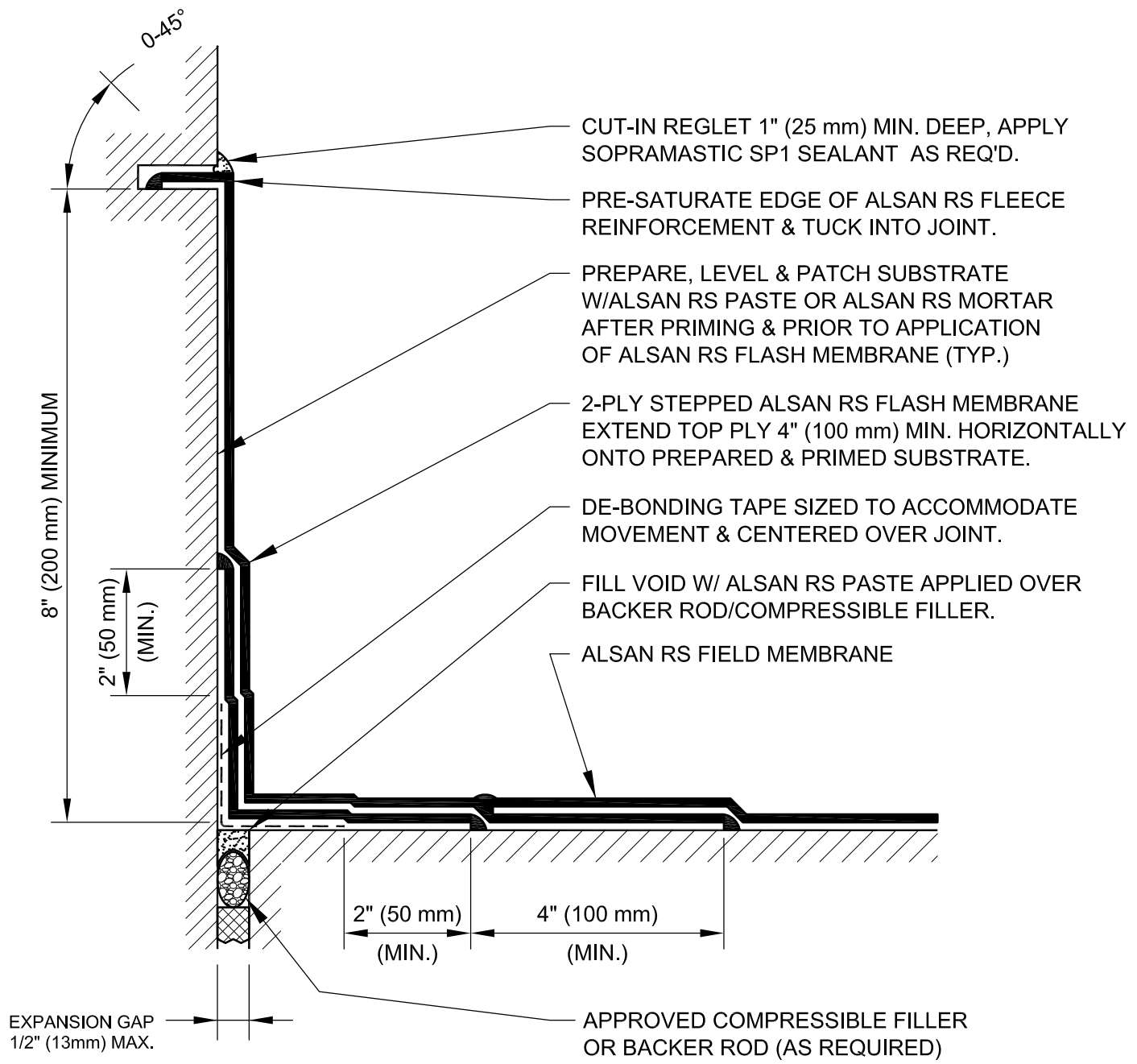


NOTE:
 SIZE WIDTH OF DE-BONDING TAPE TO PROVIDE UN-ADHERED AREA MINIMUM 5 TIMES LARGER THAN THE MAXIMUM ANTICIPATED EXPANSION. MEMBRANE COVER STRIP MUST EXTEND PAST DE-BONDING TAPE 2" MINIMUM ALL SIDES (TYP.)



CUT-IN REGLET 1" (25 mm) MIN. DEEP, APPLY SOPRAMASTIC SP1 SEALANT AS REQ'D.

PRE-SATURATE EDGE OF ALSAN RS FLEECE REINFORCEMENT & TUCK INTO JOINT.

PREPARE, LEVEL & PATCH SUBSTRATE W/ALSAN RS PASTE OR ALSAN RS MORTAR AFTER PRIMING & PRIOR TO APPLICATION OF ALSAN RS FLASH MEMBRANE (TYP.)

2-PLY STEPPED ALSAN RS FLASH MEMBRANE EXTEND TOP PLY 4" (100 mm) MIN. HORIZONTALLY ONTO PREPARED & PRIMED SUBSTRATE.

DE-BONDING TAPE SIZED TO ACCOMMODATE MOVEMENT & CENTERED OVER JOINT.

FILL VOID W/ ALSAN RS PASTE APPLIED OVER BACKER ROD/COMPRESSIBLE FILLER.

ALSAN RS FIELD MEMBRANE

APPROVED COMPRESSIBLE FILLER OR BACKER ROD (AS REQUIRED)

EXPANSION GAP 1/2" (13mm) MAX.

NOTE: REFER TO SOPREMA RELATED PUBLISHED DOCUMENTATION, PRODUCT DATA SHEETS (PDS) & SAFETY DATA SHEETS (SDS) FOR ADDITIONAL INFORMATION. ALL DETAIL DRAWINGS & RELATED INSTALLATION GUIDELINES ARE PROVIDED BY SOPREMA FOR THE SOLE PURPOSE OF SOPREMA WARRANTY QUALIFICATION. ACCORDINGLY, ANY DETAILS DRAWINGS PROVIDED ARE NOT OFFERED AND SHOULD NOT BE CONSIDERED A SUBSTITUTE FOR PROFESSIONAL DESIGN SERVICES. USAGE OF THIS DRAWING IS GOVERNED BY THE TERMS OF SERVICE FOR SOPREMA DETAIL, PLEASE CONSULT THESE TERMS OF SERVICE PRIOR TO UTILIZING THIS DRAWING.

310 QUADRAL DRIVE
 WADSWORTH, OHIO 44281
 (330) 334-0066

ALSAN RS WATERPROOFING MEMBRANE DECK TO WALL FLUSH EXPANSION JOINT				
REVISION	ISSUE DATE	SCALE	DRAWN BY	
0	12-15-2018	N.T.S.	DRW	

DRAWING NO.:
RS-J2C

RS_J02C