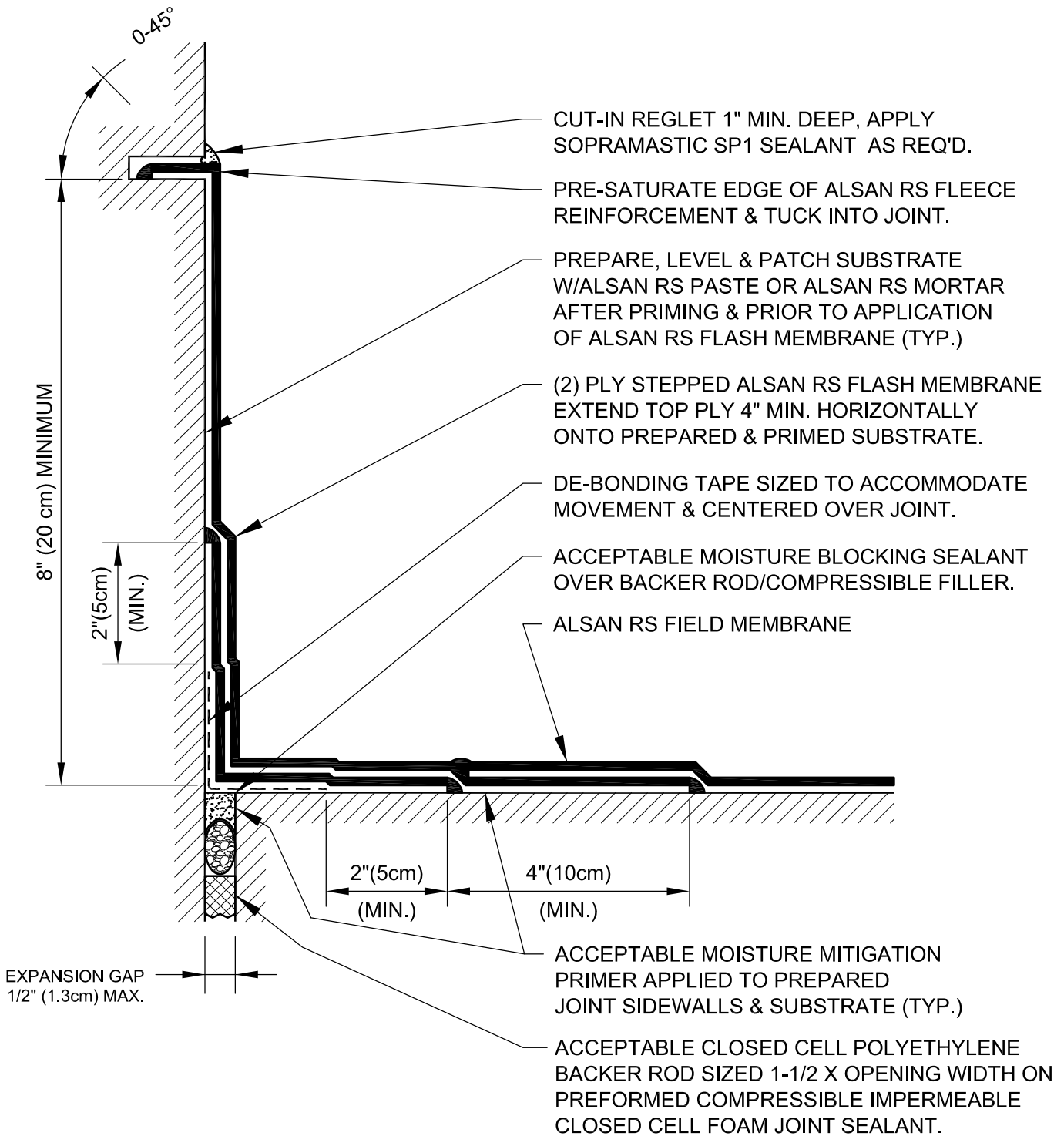


NOTE:
 SIZE WIDTH OF DE-BONDING TAPE TO PROVIDE UN-ADHERED AREA MINIMUM 5 TIMES LARGER THAN THE MAXIMUM ANTICIPATED EXPANSION. MEMBRANE COVER STRIP MUST EXTEND PAST DE-BONDING TAPE 2" MINIMUM ALL SIDES (TYP.)



NOTE: REFER TO SOPREMA RELATED PUBLISHED DOCUMENTATION, PRODUCT DATA SHEETS (PDS) & SAFETY DATA SHEETS (SDS) FOR ADDITIONAL INFORMATION. ALL DETAIL DRAWINGS & RELATED INSTALLATION GUIDELINES ARE PROVIDED BY SOPREMA FOR THE SOLE PURPOSE OF SOPREMA WARRANTY QUALIFICATION. ACCORDINGLY, ANY DETAILS DRAWINGS PROVIDED ARE NOT OFFERED AND SHOULD NOT BE CONSIDERED A SUBSTITUTE FOR PROFESSIONAL DESIGN SERVICES. USAGE OF THIS DRAWING IS GOVERNED BY THE TERMS OF SERVICE FOR SOPREMA DETAIL, PLEASE CONSULT THESE TERMS OF SERVICE PRIOR TO UTILIZING THIS DRAWING.

310 QUADRAL DRIVE
 WADSWORTH, OHIO 44281
 (330) 334-0066

**ALSAN RS WATERPROOFING MEMBRANE (MMP)
 DECK TO WALL FLUSH EXPANSION JOINT**

DRAWING NO.:
RS-J2F

REVISION	ISSUE DATE	SCALE	DRAWN BY
0	12-15-2018	N.T.S.	DRW

RS_J02F