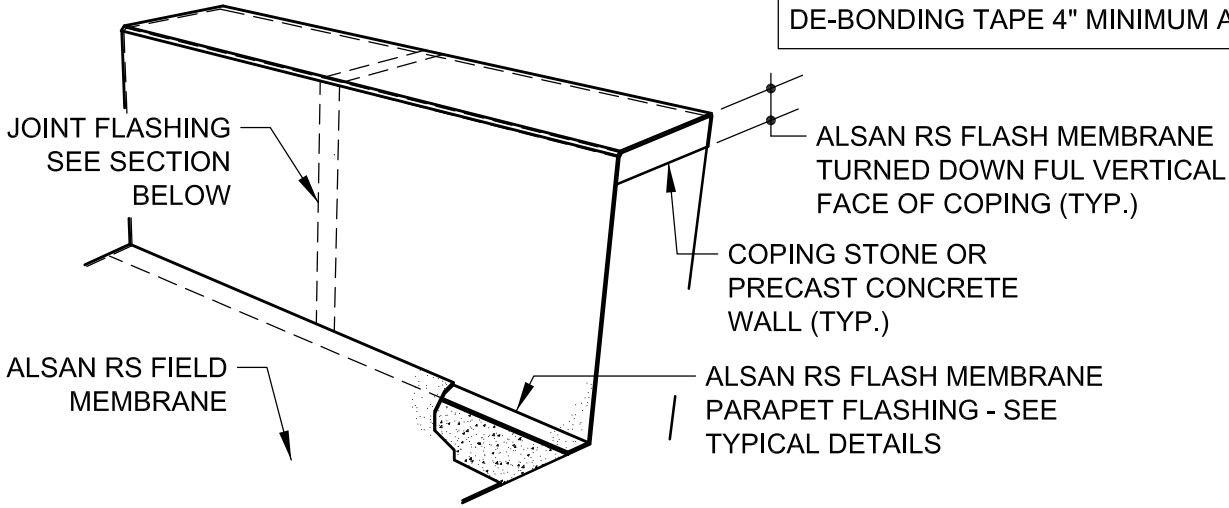


NOTE:
 SIZE WIDTH OF DE-BONDING TAPE TO PROVIDE UN-ADHERED AREA MINIMUM 5 TIMES LARGER THAN THE MAXIMUM ANTICIPATED EXPANSION. MEMBRANE COVER STRIP MUST EXTEND PAST DE-BONDING TAPE 4" MINIMUM ALL SIDES (TYP.)

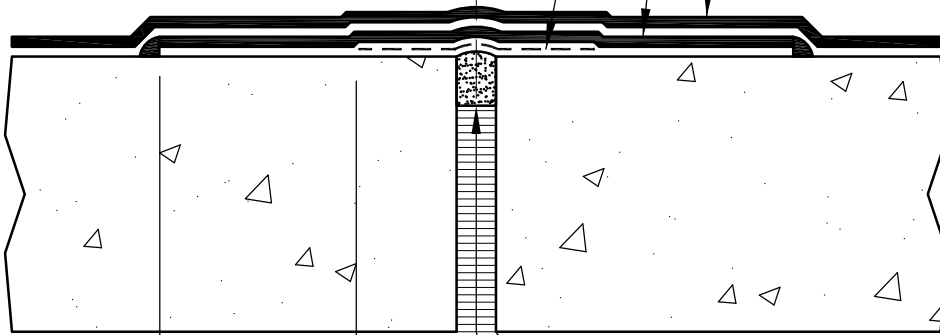


VIEW @ PARAPET WALL

NOTE:
 THIS DETAIL MAY BE USED WHEN ALSAN RS FLASH MEMBRANE IS TURNED DOWN THE FULL VERTICAL FACE OF COPING OR VERTICALLY 2" MIN. ON PRECAST WALLS.

DE-BONDING TAPE SIZED TO ACCOMMODATE MOVEMENT & CENTERED OVER CONC. JOINT.
 6" WIDE MINIMUM ALSAN RS FLASH MEMBRANE STRIP APPLIED OVER DE-BONDING TAPE & CENTERED OVER JOINT IN CONCRETE (TYP.)
 ALSAN RS FLASH MEMBRANE APPLIED CONTINUOUSLY OVER ALSAN RS FLASH STRIP @ ALL JOINTS IN CONCRETE (TYP.)

EXPANSION GAP AS REQUIRED.



PREFORMED COMPRESSIBLE FILLER OR BACKER ROD SIZED FOR OPENING.
 FILL VOID @ CONCRETE JOINT W/ ALSAN RS PASTE OR ACCEPTABLE FILLER AS REQ'D.

SECTION THRU JOINT

SCALE: NTS

NOTE: REFER TO SOPREMA RELATED PUBLISHED DOCUMENTATION, PRODUCT DATA SHEETS (PDS) & SAFETY DATA SHEETS (SDS) FOR ADDITIONAL INFORMATION. ALL DETAIL DRAWINGS & RELATED INSTALLATION GUIDELINES ARE PROVIDED BY SOPREMA FOR THE SOLE PURPOSE OF SOPREMA WARRANTY QUALIFICATION. ACCORDINGLY, ANY DETAILS DRAWINGS PROVIDED ARE NOT OFFERED AND SHOULD NOT BE CONSIDERED A SUBSTITUTE FOR PROFESSIONAL DESIGN SERVICES. USAGE OF THIS DRAWING IS GOVERNED BY THE TERMS OF SERVICE FOR SOPREMA DETAIL, PLEASE CONSULT THESE TERMS OF SERVICE PRIOR TO UTILIZING THIS DRAWING.

310 QUADRAL DRIVE
 WADSWORTH, OHIO 44281
 (330) 334-0066

**ALSAN RS WATERPROOFING MEMBRANE
 WALL BASE FLASHING (TYPICAL)**

DRAWING NO.:
RS-J4A

REVISION	ISSUE DATE	SCALE	DRAWN BY
0	12-15-2018	N.T.S.	DRW

RS_J04A