

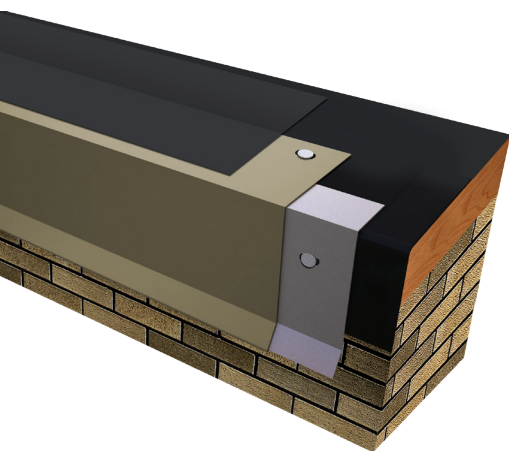
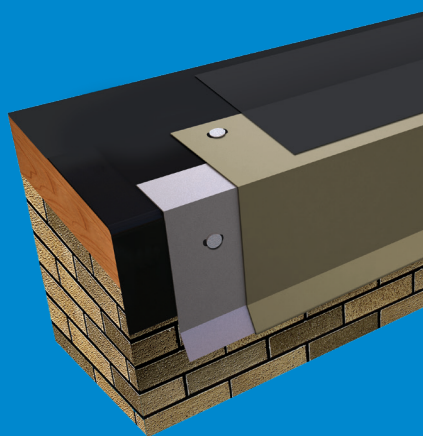


ROOFING &  
WATERPROOFING

# SOPREMA®

## MODIFIED DRIP EDGE

### ROOFING



SOPREMA Modified Drip Edge is engineered with an interlocking, concealed splice plate designed to prevent splice plate migration under the fascia panels. SOPREMA Modified Drip Edge is manufactured in 12 foot lengths with pre-punched fastening holes for precise fastener placement. Factory fabricated miters, scuppers and drainage accessories eliminate the need for field fabrication.

- No need for stripping-in or heat welding that are typical with other systems
- Factory Mutual approved for wind uplift
- Watertight integrity is not compromised by improper flashing procedures, failed adhesives, or lap sealants
- Decreased labor costs due to ease of installation
- ANSI/SPRI/ES-1 tested to comply with the International Building Code
- Florida Building Code Approved

#### RELATED PRODUCTS

##### SOPRALENE 180 FR GR

An SBS-modified bitumen cap ply for use in approved multi-ply membrane and flashing assemblies, composed of a proprietary formulation of elastomeric styrene-butadiene-styrene (SBS) polymer modified bitumen and reinforced with a tough, dimensionally stable non-woven polyester mat.



SOPREMA.US • 1.800.356.3521

SOPREMA.CA • 1.877.MAMMOUTH

SS10089 - REV. 0918