



# STPE TECHNOLOGY

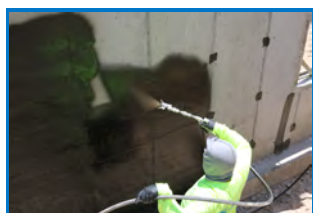
## Silyl-Terminated Polyether

### HIGH PERFORMANCE WATERPROOFING PRODUCTS

STPE polymers are a hybrid material that is made to exhibit the best attributes of silicones and urethanes in one product. This technology is also known as MS Polymer, SPUR, Polyether and STP.

By combining the best attributes of silicone and urethane materials in a sprayable product, STPE technology offers the best of both worlds. When looking for an environmentally safe product that offers design flexibility with fast cure speeds and low VOCs, these products are the perfect solution.

#### COLPHENE® LM BARR SPRAY



SOPREMA's STPE waterproofing is superior to conventional liquid applied and self-adhered products because it can be applied to green concrete, it is sprayable, primerless, and is environmentally safe and applicator friendly.

- World's first sprayable STPE waterproofing
- 95% solids - minimal shrinkage means it cures to the thickness it is applied
- Low VOC and low odor
- No priming
- Use on 3 day old green or damp concrete
- Spray full applications in one lift
- Rain safe in minutes

#### SOPRASEAL® LM 204 VP



SOPREMA's STPE liquid applied air barrier is superior to other liquid applied vapor permeable air barriers because it is nearly 100% solid, making it easy to apply at the thickness that is required. It is low VOC and safe for the environment and the applicator. There is no primer needed for all common wall types and can be sprayed onto green concrete walls.

- Easy to spray with conventional spray pumps
- 98% solids - minimal material shrinkage
- Excellent adhesion to a range of substrates including plywood, exterior gypsum, concrete, CMU
- Low temperature applications
- Use on 3 day old green or damp concrete
- Excellent UV stability
- Rain safe in minutes

