



WATERPROOFING

VERY SEVERE HAIL

VSH RATED ROOF SYSTEMS

WHAT IS VERY SEVERE HAIL?

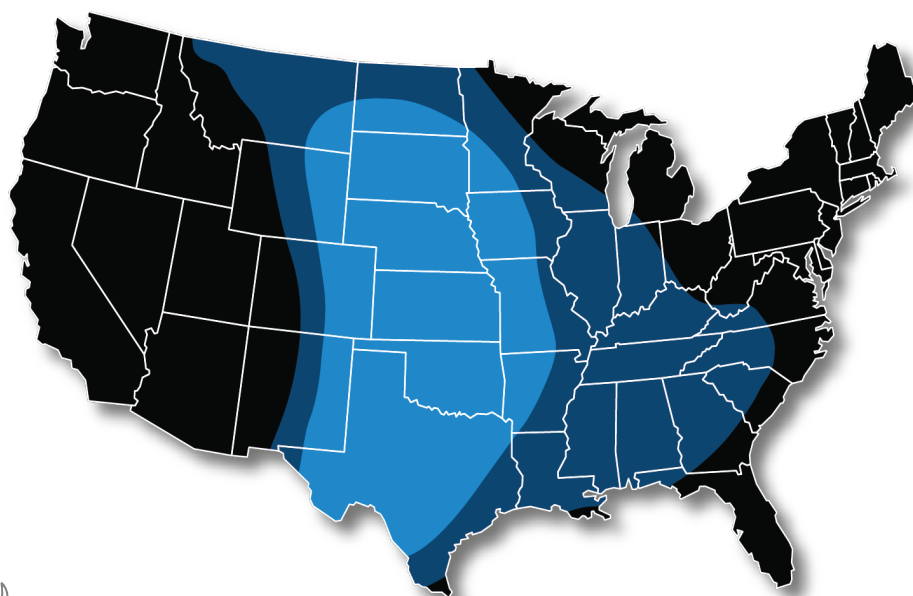
When it comes to the protection of your building, your roof is the first line of defense against severe weather. There are few weather events more devastating to a roofing system than hail. In recent years, these weather events have become more frequent and severe. FM Global, one of the country's most prominent property insurance companies, specializes in loss prevention utilizing engineering rigorous testing to mitigate risks. FM Global has designated hail zones in the U.S., classifying each zone based on the size of hail:

EXCEPTIONAL PERFORMANCE

These zones are used when designing, specifying, and constructing roof systems to ensure they meet the criteria to withstand impacts from the designated hail size. The geographic areas have increased year-over-year according to FM Global. Roof systems need to be designed and installed with resilience in mind.

DID YOU KNOW?

The largest hailstone recorded in the United States was documented in South Dakota in 2010. The hailstone measured 8" in diameter, over 18.5" in circumference and weighed almost two pounds! That's the size of a volleyball!



MODERATE HAIL

Up to 1 3/4" - Golf ball



SEVERE HAIL

Up to 2" - Egg



VERY SEVERE HAIL

Greater than 2" - Baseball

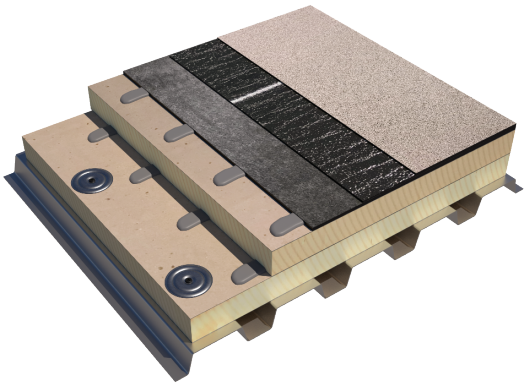


VSH RATED ROOF ASSEMBLIES

SOPREMA LEADS THE INDUSTRY IN VSH ASSEMBLIES

When it comes to Very Severe Hail (VSH) rated roof assemblies, SOPREMA outperforms the competition. As of August 2021 SOPREMA currently holds approximately 35% of the VSH rated Roof-NAV assemblies listed with FM Global for SBS roof system assemblies. These assemblies undergo the most stringent testing in order to obtain VSH approval and are a testament to the proven resilience and durability of our SBS-modified bitumen roof systems.

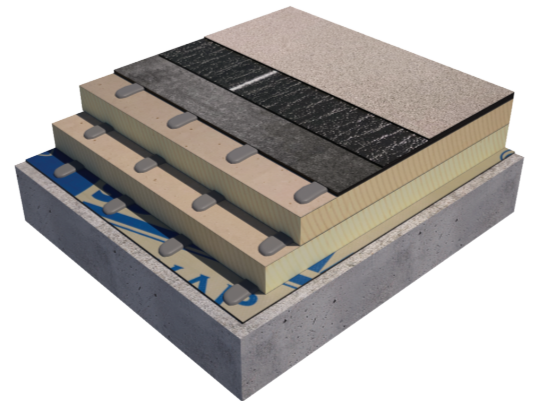
VSH STEEL DECK ASSEMBLY



Class 1-90	Roof NAV #453945-453860-0
Deck	Steel Deck
ISO	2" SOPRA-ISO mechanically fastened
ISO	2" SOPRA-ISO glued with DUOTACK 365
Coverboard	1/4" SOPRABOARD® glued with DUOTACK 365
Base Membrane	SOPRALENE® FLAM 180 (heat welded)
Cap Membrane	SOPRALENE® FLAM 180 FR GR WH (heat welded)

Class 1-480	Roof NAV #453953-453860-0
Deck	Concrete
Primer	ELASTOCOL STICK
Vapor Retarder	SOPRAVAP'r (self adhered)
ISO	2" SOPRA-ISO glued with DUOTACK 365 (2 layers)
Coverboard	1/4" SOPRABOARD glued with DUOTACK 365
Base Membrane	SOPRALENE® FLAM 180 (heat welded)
Cap Membrane	SOPRALENE® FLAM 180 FR GR WH (heat welded)

VSH CONCRETE DECK ASSEMBLY



DID YOU KNOW?

The costliest hailstorm in U.S. history occurred in 2001 and spanned over three states. Hitting Kansas, Missouri and Illinois, the storm produced baseball-sized hail and caused over \$2 billion in damages.



021521

