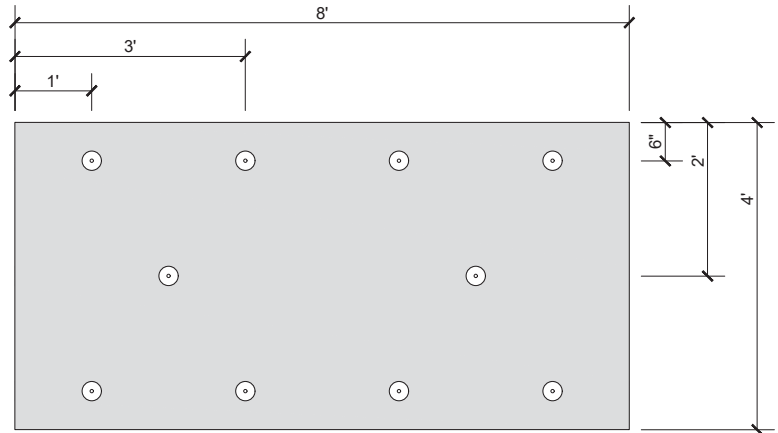



**1 PER 3.2 FT<sup>2</sup> FASTENING PATTERN**

- ACTUAL ONE (1) FASTENER PER 3.2 SQUARE FEET
- TEN (10) FASTENERS PER BOARD
- ENSURE FASTENER ENGAGES THE TOP FLANGE FOR STEEL DECK APPLICATIONS



**NOTES:**

1. SOPREMA DETAIL DRAWINGS: REFER TO SOPREMA AND OTHER RELATED PUBLISHED DOCUMENTATION, PRODUCT DATA SHEETS (PDS) AND SAFETY DATA SHEETS (SDS) FOR ADDITIONAL INFORMATION. ALL DETAIL DRAWINGS AND RELATED INSTALLATION GUIDELINES ARE PROVIDED BY SOPREMA FOR THE SOLE PURPOSE OF ISSUING A SOPREMA WARRANTY. ACCORDINGLY, THE DETAIL DRAWINGS ARE NOT OFFERED, AND SHOULD NOT BE CONSIDERED, AS A SUBSTITUTE FOR PROFESSIONAL DESIGN SERVICES.
2. SOPREMA NOR ITS EMPLOYEES ARE DESIGNER OF RECORD FOR ANY PROJECT. FASTENING PATTERNS PROVIDED BY SOPREMA ARE FOR SOPREMA WARRANTY PURPOSES ONLY. REFER TO LOCAL BUILDING CODES, DESIGNER OF RECORD DOCUMENTS, AND JURISDICTIONAL/AGENCY APPROVALS FOR PROJECT-SPECIFIC FASTENING REQUIREMENTS.
3. ROOF ZONE GUIDELINES PROVIDED HEREIN ARE OFFERED FOR REFERENCE. REFER TO ASCE/SEI 7 FOR SPECIFIC REQUIREMENTS.

|   |   |  |  |           |                                       |
|---|---|--|--|-----------|---------------------------------------|
|  <p>US CORPORATE ADDRESS<br/>310 QUADRAL DRIVE<br/>WADSWORTH, OHIO 44281<br/><a href="http://www.soprema.us">www.soprema.us</a><br/>Tel:330.334.0066</p> | PROJECT:  |  | DRAWN BY: SOPREMA TECHNICAL SUPPORT, GGALLOWAY |           |                                       |
|   | TITLE:<br><br><b>1 FASTENER PER 3.2 FT<sup>2</sup>,<br/>4X8 BOARD FASTENING PATTERN</b> |  | NO.:   | REVISION: | DATE:                                 |
|   |   |  | DATE: 2.19.2020                                |           | DRAWING NUMBER:<br><b>US.FP.04.02</b> |
|   |   |  | SCALE: NTS                                     |           |                                       |