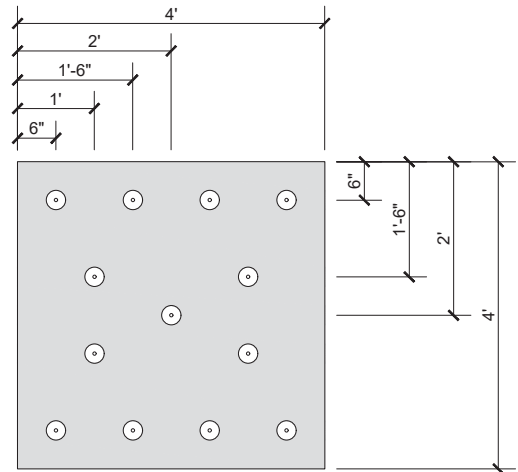


- ZONE 1**
- ACTUAL ONE (1) FASTENER PER 1.3 SQUARE FEET
 - THIRTEEN (13) FASTENERS PER BOARD
 - ENSURE FASTENER ENGAGES THE TOP FLANGE FOR STEEL DECK APPLICATIONS



- ZONE 2**
- PRESCRIPTIVE ENHANCEMENT WILL REQUIRE MORE THAN ONE (1) FASTENER PER 1 SQUARE FOOT
 - ALTERNATE ATTACHMENT METHODS SHOULD BE CONSIDERED FOR PERIMETER ENHANCEMENTS SUCH AS MECHANICALLY ATTACHED MEMBRANE SYSTEMS
 - CONTACT SOPREMA TECHNICAL SUPPORT FOR ADDITIONAL INFORMATION.

- ZONE 3**
- ALTERNATE ATTACHMENT METHODS SHOULD BE CONSIDERED FOR CORNER ENHANCEMENTS SUCH AS MECHANICALLY ATTACHED MEMBRANE SYSTEMS
 - CONTACT SOPREMA TECHNICAL SUPPORT FOR ADDITIONAL INFORMATION.

NOTES:

1. SOPREMA DETAIL DRAWINGS: REFER TO SOPREMA AND OTHER RELATED PUBLISHED DOCUMENTATION, PRODUCT DATA SHEETS (PDS) AND SAFETY DATA SHEETS (SDS) FOR ADDITIONAL INFORMATION. ALL DETAIL DRAWINGS AND RELATED INSTALLATION GUIDELINES ARE PROVIDED BY SOPREMA FOR THE SOLE PURPOSE OF ISSUING A SOPREMA WARRANTY. ACCORDINGLY, THE DETAIL DRAWINGS ARE NOT OFFERED, AND SHOULD NOT BE CONSIDERED, AS A SUBSTITUTE FOR PROFESSIONAL DESIGN SERVICES.
2. SOPREMA NOR ITS EMPLOYEES ARE DESIGNER OF RECORD FOR ANY PROJECT. FASTENING PATTERNS PROVIDED BY SOPREMA ARE FOR SOPREMA WARRANTY PURPOSES ONLY. REFER TO LOCAL BUILDING CODES, DESIGNER OF RECORD DOCUMENTS, AND JURISDICTIONAL/AGENCY APPROVALS FOR PROJECT-SPECIFIC FASTENING REQUIREMENTS.

SOPREMA[®]

US CORPORATE ADDRESS
310 QUADRAL DRIVE
WADSWORTH, OHIO 44281
www.soprema.us
Tel: 330.334.0066

PROJECT:	DRAWN BY: SOPREMA TECHNICAL SUPPORT, GGALLOWAY	
TITLE: 1 FASTENER PER 1.3 FT² AND PRESCRIPTIVE ENHANCEMENTS, 4X4 BOARD FASTENING PATTERN	NO.:	REVISION:
	DATE: 4.23.2020	DATE:
SCALE: NTS	DRAWING NUMBER: US.FP.12.09	

NO.:	REVISION:	DATE:
DATE: 4.23.2020	DATE:	
SCALE: NTS	DRAWING NUMBER: US.FP.12.09	