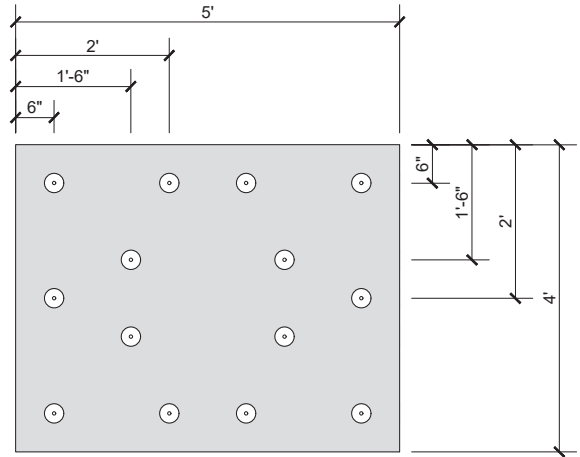


ZONE 1

- ONE (1) FASTENER PER 1.43 SQUARE FEET
- FOURTEEN (14) FASTENERS PER BOARD
- ENSURE FASTENER ENGAGES THE TOP FLANGE FOR STEEL DECK APPLICATIONS



ZONE 2

- PRESCRIPTIVE ENHANCEMENT WILL REQUIRE MORE THAN ONE (1) FASTENER PER 1 SQUARE FOOT
- ALTERNATE ATTACHMENT METHODS SHOULD BE CONSIDERED FOR PERIMETER ENHANCEMENTS SUCH AS MECHANICALLY ATTACHED MEMBRANE SYSTEMS
- CONTACT SOPREMA TECHNICAL SUPPORT FOR ADDITIONAL INFORMATION.

ZONE 3

- ALTERNATE ATTACHMENT METHODS SHOULD BE CONSIDERED FOR CORNER ENHANCEMENTS SUCH AS MECHANICALLY ATTACHED MEMBRANE SYSTEMS
- CONTACT SOPREMA TECHNICAL SUPPORT FOR ADDITIONAL INFORMATION.

NOTES:

1. SOPREMA DETAIL DRAWINGS: REFER TO SOPREMA AND OTHER RELATED PUBLISHED DOCUMENTATION, PRODUCT DATA SHEETS (PDS) AND SAFETY DATA SHEETS (SDS) FOR ADDITIONAL INFORMATION. ALL DETAIL DRAWINGS AND RELATED INSTALLATION GUIDELINES ARE PROVIDED BY SOPREMA FOR THE SOLE PURPOSE OF ISSUING A SOPREMA WARRANTY. ACCORDINGLY, THE DETAIL DRAWINGS ARE NOT OFFERED, AND SHOULD NOT BE CONSIDERED, AS A SUBSTITUTE FOR PROFESSIONAL DESIGN SERVICES.
2. SOPREMA NOR ITS EMPLOYEES ARE DESIGNER OF RECORD FOR ANY PROJECT. FASTENING PATTERNS PROVIDED BY SOPREMA ARE FOR SOPREMA WARRANTY PURPOSES ONLY. REFER TO LOCAL BUILDING CODES, DESIGNER OF RECORD DOCUMENTS, AND JURISDICTIONAL/AGENCY APPROVALS FOR PROJECT-SPECIFIC FASTENING REQUIREMENTS.

SOPREMA[®]

US CORPORATE ADDRESS
310 QUADRAL DRIVE
WADSWORTH, OHIO 44281
www.soprema.us
Tel: 330.334.0066

PROJECT:	
TITLE:	1 FASTENER PER 1.45 AND 1.6 FT ² AND PRESCRIPTIVE ENHANCEMENTS, 4X4 BOARD FASTENING PATTERN

DRAWN BY: SOPREMA TECHNICAL SUPPORT, GGALLOWAY		
NO.:	REVISION:	DATE:
DATE: 4.23.2020	DRAWING NUMBER: US.FP.13.06	
SCALE: NTS		