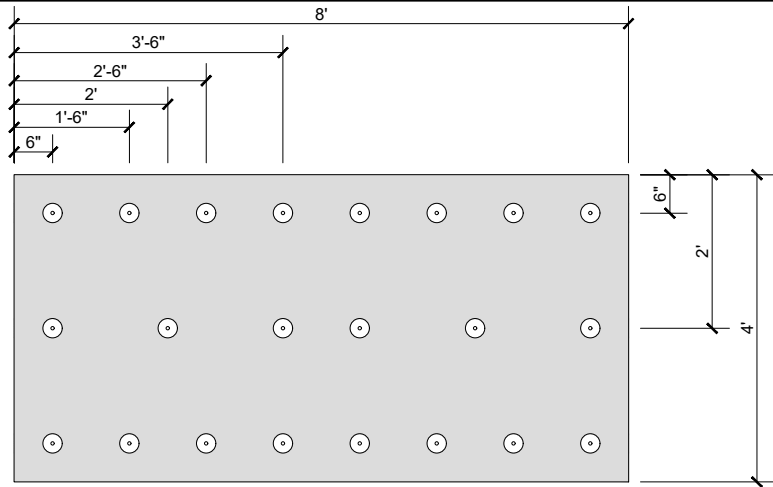


DRAWING MUST BE VIEWED IN ADOBE ACROBAT TO ENABLE CUSTOM LAYERING

ZONE 1

- ACTUAL ONE (1) FASTENER PER 1.45 SQUARE FEET
- TWENTY TWO (22) FASTENERS PER BOARD
- ENSURE FASTENER ENGAGES THE TOP FLANGE FOR STEEL DECK APPLICATIONS



ZONE 2

- PRESCRIPTIVE ENHANCEMENT WILL REQUIRE MORE THAN ONE (1) FASTENER PER 1 SQUARE FOOT
- ALTERNATE ATTACHMENT METHODS SHOULD BE CONSIDERED FOR PERIMETER ENHANCEMENTS SUCH AS MECHANICALLY ATTACHED MEMBRANE SYSTEMS
- CONTACT SOPREMA TECHNICAL SUPPORT FOR ADDITIONAL INFORMATION.

ZONE 3

- ALTERNATE ATTACHMENT METHODS SHOULD BE CONSIDERED FOR CORNER ENHANCEMENTS SUCH AS MECHANICALLY ATTACHED BASE PLY SYSTEMS OR RIBBON ADHERED BOARDS FOR SOPREMA WARRANTY PURPOSES.
- CONSULT WITH SOPREMA TECHNICAL SUPPORT FOR FURTHER INFORMATION.

NOTES:

1. SOPREMA DETAIL DRAWINGS: REFER TO SOPREMA AND OTHER RELATED PUBLISHED DOCUMENTATION, PRODUCT DATA SHEETS (PDS) AND SAFETY DATA SHEETS (SDS) FOR ADDITIONAL INFORMATION. ALL DETAIL DRAWINGS AND RELATED INSTALLATION GUIDELINES ARE PROVIDED BY SOPREMA FOR THE SOLE PURPOSE OF ISSUING A SOPREMA WARRANTY. ACCORDINGLY, THE DETAIL DRAWINGS ARE NOT OFFERED, AND SHOULD NOT BE CONSIDERED, AS A SUBSTITUTE FOR PROFESSIONAL DESIGN SERVICES.
2. SOPREMA NOR ITS EMPLOYEES ARE DESIGNER OF RECORD FOR ANY PROJECT. FASTENING PATTERNS PROVIDED BY SOPREMA ARE FOR SOPREMA WARRANTY PURPOSES ONLY. REFER TO LOCAL BUILDING CODES, DESIGNER OF RECORD DOCUMENTS, AND JURISDICTIONAL/AGENCY APPROVALS FOR PROJECT-SPECIFIC FASTENING REQUIREMENTS.

SOPREMA
 US CORPORATE ADDRESS
 310 QUADRAL DRIVE
 WADSWORTH, OHIO 44281
 www.soprema.us
 Tel: 330.334.0066

PROJECT:

TITLE: **1 FASTENER PER 1.45 FT²
 AND PRESCRIPTIVE ENHANCEMENTS,
 4X8 BOARD FASTENING PATTERN**

DRAWN BY: SOPREMA TECHNICAL SUPPORT, GGALLOWAY

NO.:	REVISION:	DATE:

DATE: 4.20.2020

SCALE: NTS

DRAWING NUMBER:
US.FP.14.09