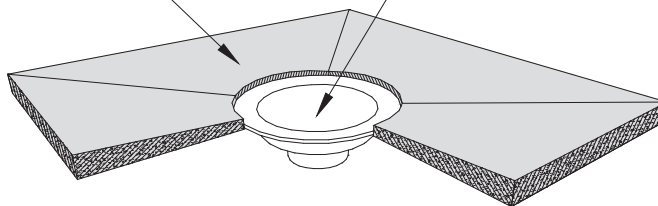


TAPERED INSULATION SUMP AROUND PRIMARY DRAINS

ROOF DRAIN BOWL (OTHER PLUMBING COMPONENTS NOT SHOWN)



30" X 30" SOFT METAL FLASHING PRIMED ON BOTH SIDES AND SET IN A BED OF SOPRAMASTIC SBS MASTIC, FORM SPECIFIED SOFT METAL TO DRAIN BOWL AS SHOWN

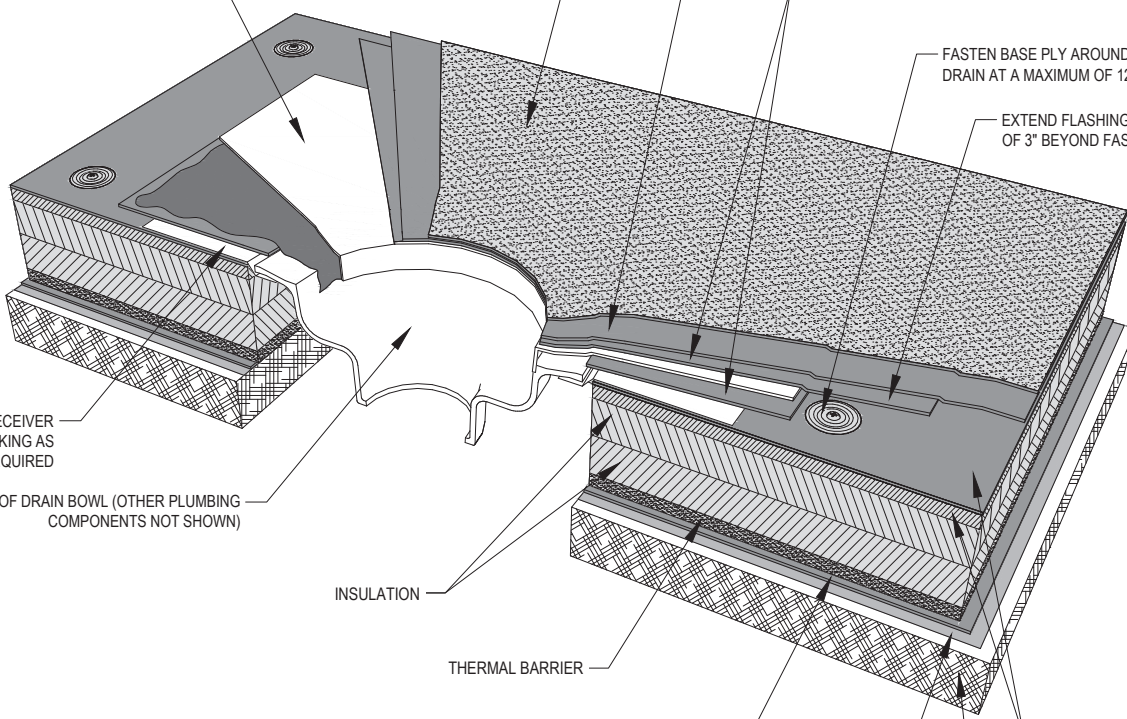
CAP SHEET

INTERMEDIATE PLY

POLYESTER REINFORCED FLASHING BASE PLY

FASTEN BASE PLY AROUND ROOF DRAIN AT A MAXIMUM OF 12" O.C.

EXTEND FLASHING BASE PLY A MINIMUM OF 3" BEYOND FASTENER PLATE



DRAIN BOWL RECEIVER AND WOOD BLOCKING AS REQUIRED

ROOF DRAIN BOWL (OTHER PLUMBING COMPONENTS NOT SHOWN)

INSULATION

THERMAL BARRIER

VAPOR RETARDER/AIR BARRIER

BASE SHEET/ANCHOR SHEET

SOPRASMART

DECK

NOTES:

1. SOPREMA DETAIL DRAWINGS: REFER TO SOPREMA AND OTHER RELATED PUBLISHED DOCUMENTATION, PRODUCT DATA SHEETS (PDS) AND SAFETY DATA SHEETS (SDS) FOR ADDITIONAL INFORMATION. ALL DETAIL DRAWINGS AND RELATED INSTALLATION GUIDELINES ARE PROVIDED BY SOPREMA FOR THE SOLE PURPOSE OF ISSUING A SOPREMA WARRANTY. ACCORDINGLY, THE DETAIL DRAWINGS ARE NOT OFFERED, AND SHOULD NOT BE CONSIDERED, AS A SUBSTITUTE FOR PROFESSIONAL DESIGN SERVICES.
2. HOT WORK: THE CONTRACTOR IS RESPONSIBLE FOR DETERMINING APPROPRIATE CONDITIONS TO UTILIZE HEAT-WELDING EQUIPMENT. REFER TO THE NRCA CERTA RECOMMENDATIONS, LOCAL CODES AND BUILDING OWNER'S REQUIREMENTS FOR HOT WORK OPERATIONS.
3. PRIMER: WHERE NOT SHOWN OR INDICATED ON DETAIL DRAWINGS, REFER TO MATERIAL PRODUCT DATA SHEETS FOR PRIMER APPLICATION REQUIREMENTS.



US CORPORATE ADDRESS
310 QUADRAL DRIVE
WADSWORTH, OHIO 44281
www.soprema.us
Tel: 330.334.0066

PROJECT:

TITLE: 3 PLY SOPRASMART SBS MEMBRANE,
INSULATED,
ROOF DRAIN WITH SOFT METAL FLASHING

DRAWN BY: SOPREMA TECHNICAL SUPPORT, A.RUIZ

NO.:

REVISION:

DATE:

DATE: 10.07.2021

SCALE: NTS

DRAWING NUMBER:

US.RMSBSLC.07.23

USAGE OF THIS DETAIL IS GOVERNED BY THE TERMS OF SERVICE FOR SOPREMA DETAILS.
PLEASE CONSULT THESE TERMS OF SERVICE PRIOR TO UTILIZING THIS DRAWING.