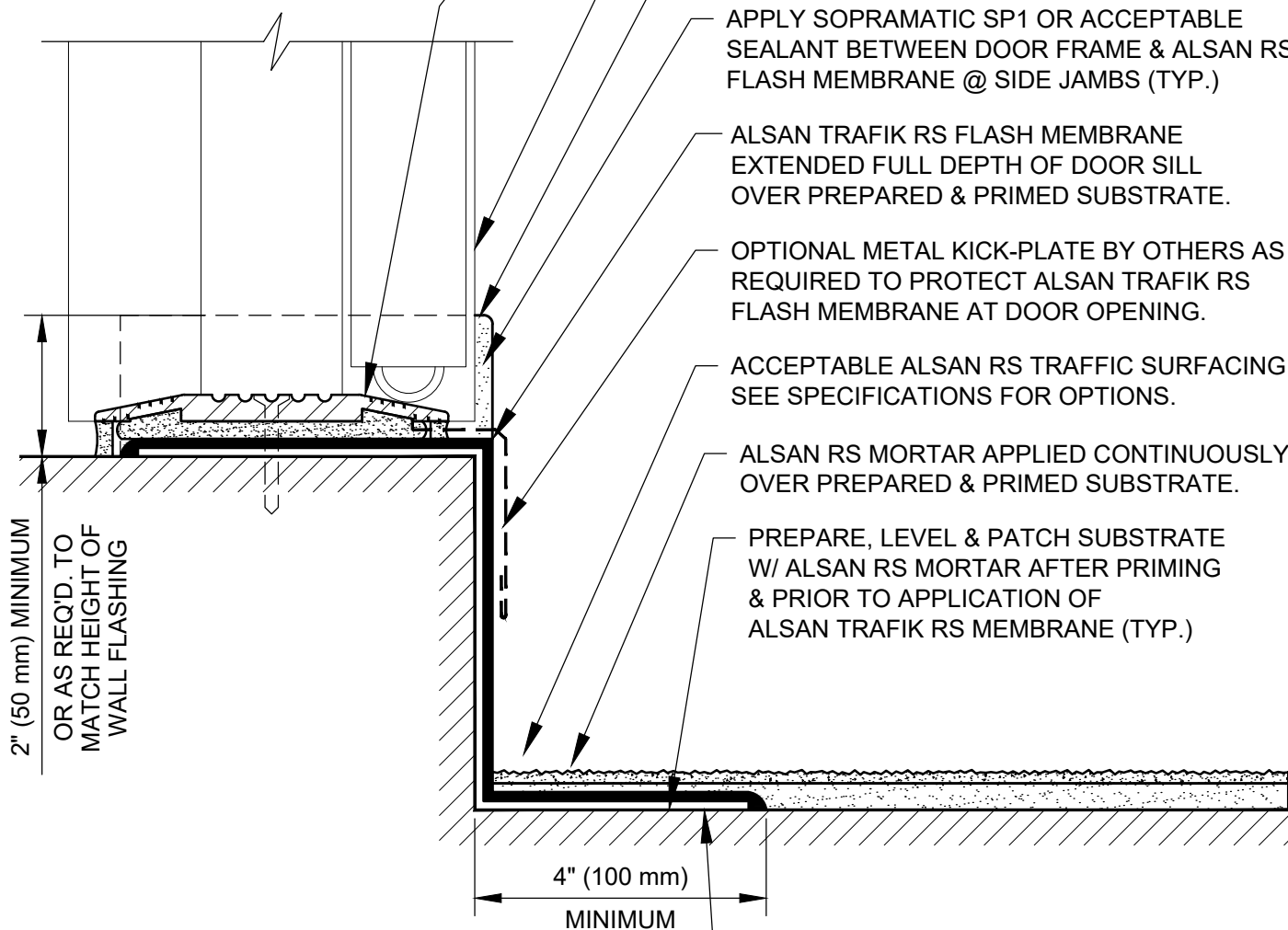


FRONT VIEW



REMOVE METAL SILL PLATE TO INSTALL ALSAN RS FLASH MEMBRANE & RESET IN FULL BED OF SOPRAMASTIC SP1 SEALANT.

REMOVE EXISTING SEALANT BETWEEN DOOR FRAME & JAMB AS REQUIRED TO INSTALL ALSAN TRAFIK RS MEMBRANE.

APPLY ALSAN TRAFIK RS FLASH MEMBRANE ONTO DOOR OPENING SIDE JAMBS EXTENDING & TERMINATED BEHIND DOOR FRAME.

APPLY SOPRAMASTIC SP1 OR ACCEPTABLE SEALANT BETWEEN DOOR FRAME & ALSAN RS FLASH MEMBRANE @ SIDE JAMBS (TYP.)

ALSAN TRAFIK RS FLASH MEMBRANE EXTENDED FULL DEPTH OF DOOR SILL OVER PREPARED & PRIMED SUBSTRATE.

OPTIONAL METAL KICK-PLATE BY OTHERS AS REQUIRED TO PROTECT ALSAN TRAFIK RS FLASH MEMBRANE AT DOOR OPENING.

ACCEPTABLE ALSAN RS TRAFFIC SURFACING SEE SPECIFICATIONS FOR OPTIONS.

ALSAN RS MORTAR APPLIED CONTINUOUSLY OVER PREPARED & PRIMED SUBSTRATE.

PREPARE, LEVEL & PATCH SUBSTRATE W/ ALSAN RS MORTAR AFTER PRIMING & PRIOR TO APPLICATION OF ALSAN TRAFIK RS MEMBRANE (TYP.)

ALSAN RS PRIMER OR APPROVED MOISTURE MITIGATION PRIMER APPLIED TO PREPARED SUBSTRATE (TYP.)

SOPREMA DETAIL DRAWINGS: REFER TO SOPREMA AND OTHER RELATED PUBLISHED DOCUMENTATION, PRODUCT DATA SHEETS (PDS) AND SAFETY DATA SHEETS (SDS) FOR ADDITIONAL INFORMATION. ALL DETAIL DRAWINGS AND RELATED INSTALLATION GUIDELINES ARE PROVIDED BY SOPREMA FOR THE SOLE PURPOSE OF ISSUING A SOPREMA WARRANTY. ACCORDINGLY, THE DETAIL DRAWINGS ARE NOT OFFERED, AND SHOULD NOT BE CONSIDERED, AS A SUBSTITUTE FOR PROFESSIONAL DESIGN SERVICES.



US CORPORATE ADDRESS  
310 QUADRAL DRIVE  
WADSWORTH, OHIO 44281  
www.soprema.us  
Tel: 330.334.0066

PROJECT:

TITLE:

**ALSAN TRAFIK RS PARTIALLY REINFORCED  
WATERPROOFING & SURFACING  
RAISED DOOR SILL FLASHING**

DRAWN BY: SOPREMA TECHNICAL SUPPORT, DWALDRON

NO.:

REVISION:

DATE:

DATE: 1-15-2022

DRAWING NUMBER:

**US.RTN.02.M02A**

SCALE: NTS

USAGE OF THIS DETAIL IS GOVERNED BY THE TERMS OF SERVICE FOR SOPREMA DETAILS. PLEASE CONSULT THESE TERMS OF SERVICE PRIOR TO UTILIZING THIS DRAWING.