

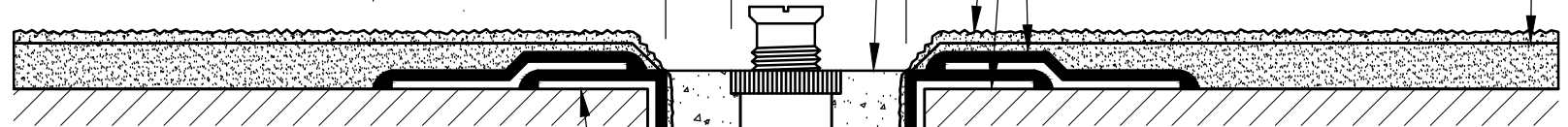
**ISOMETRIC VIEW**

DEPTH  
AS REQ'D.

2" (50mm)  
MINIMUM

1/2" (12mm)  
MINIMUM

4" (100 mm)  
OVERLAP



PREPARE, LEVEL & PATCH SUBSTRATE W/  
ALSAN RS MORTAR AFTER PRIMING & PRIOR  
TO APPLYING ALSAN TRAFIK RS MEMBRANE.

SUPPLEMENTAL COAT OF ALSAN TRAFIK RS  
RESIN BROADCAST W/AGGREGATE AS  
PROTECTION/BONDING LAYER.

ALSAN TRAFIK RS MEMBRANE PATCH  
APPLIED OVER SKIRT FINGERS  
@ BASE OF POCKET.

1/2" (12mm)  
MINIMUM

NON-SHRINK PRECISION HIGH STRENGTH  
NON-METALLIC PORTLAND CEMENT BASED  
GROUT AS REQUIRED (BY OTHERS)

ALSAN RS TRAFFIC SURFACING & FINISH  
AS REQUIRED. SEE STD. SPECIFICATIONS  
FOR RECOMMENDED SURFACING &  
FINISH OPTIONS (TYP.)

ALSAN RS PRIMER OR APPROVED  
MOISTURE MITIGATION PRIMER APPLIED  
TO PREPARED SUBSTRATE (TYP.)

ALSAN RS MORTAR APPLIED CONT.  
OVER PRIMED SUBSTRATE.


ALSAN RS TARGET FLASHING SIZED  
AS REQUIRED.

ALSAN TRAFIK RS FLASH MEMBRANE SKIRT  
WRAPPED AROUND HOLE POCKET W/  
3" (75mm) FINGERS & 1" (25mm) RETURN  
OVERLAP TOP & BOTTOM.

BRASS OR STAINLESS STEEL ANCHOR  
AS REQUIRED FOR EQUIPMENT  
MOUNTING (BY OTHERS)

ANCHOR HOLE DRILLED IN STRUCTURAL  
CONCRETE SIZED AS REQUIRED FOR  
MORTAR & ANCHOR PLACEMENT.

SOPREMA DETAIL DRAWINGS: REFER TO SOPREMA AND OTHER RELATED PUBLISHED DOCUMENTATION, PRODUCT DATA SHEETS (PDS), AND SAFETY DATA SHEETS (SDS) FOR ADDITIONAL INFORMATION. ALL DETAIL DRAWINGS AND RELATED INSTALLATION GUIDELINES ARE PROVIDED BY SOPREMA FOR THE SOLE PURPOSE OF ISSUING A SOPREMA WARRANTY. ACCORDINGLY, THE DETAIL DRAWINGS ARE NOT OFFERED, AND SHOULD NOT BE CONSIDERED, AS A SUBSTITUTE FOR PROFESSIONAL DESIGN SERVICES.

DRAWN BY: SOPREMA TECHNICAL SUPPORT, DWALDRON		DATE:	
NO.:	REVISION:		
DATE: 1-15-2022		DRAWING NUMBER: <b>US.RTN.02.M09A</b>	
SCALE: NTS			
PROJECT:		TITLE:	
<b>ALSAN TRAFIK RS PARTIALLY REINFORCED WATERPROOFING &amp; SURFACING ANCHOR FIXTURE POCKET FLASHING</b>			
 <p>US CORPORATE ADDRESS 310 QUADRAL DRIVE WADSWORTH, OHIO 44281 www.soprema.us Tel: 330.334.0066</p>			

USAGE OF THIS DETAIL IS GOVERNED BY THE TERMS OF SERVICE FOR SOPREMA DETAILS. PLEASE CONSULT THESE TERMS OF SERVICE PRIOR TO UTILIZING THIS DRAWING.