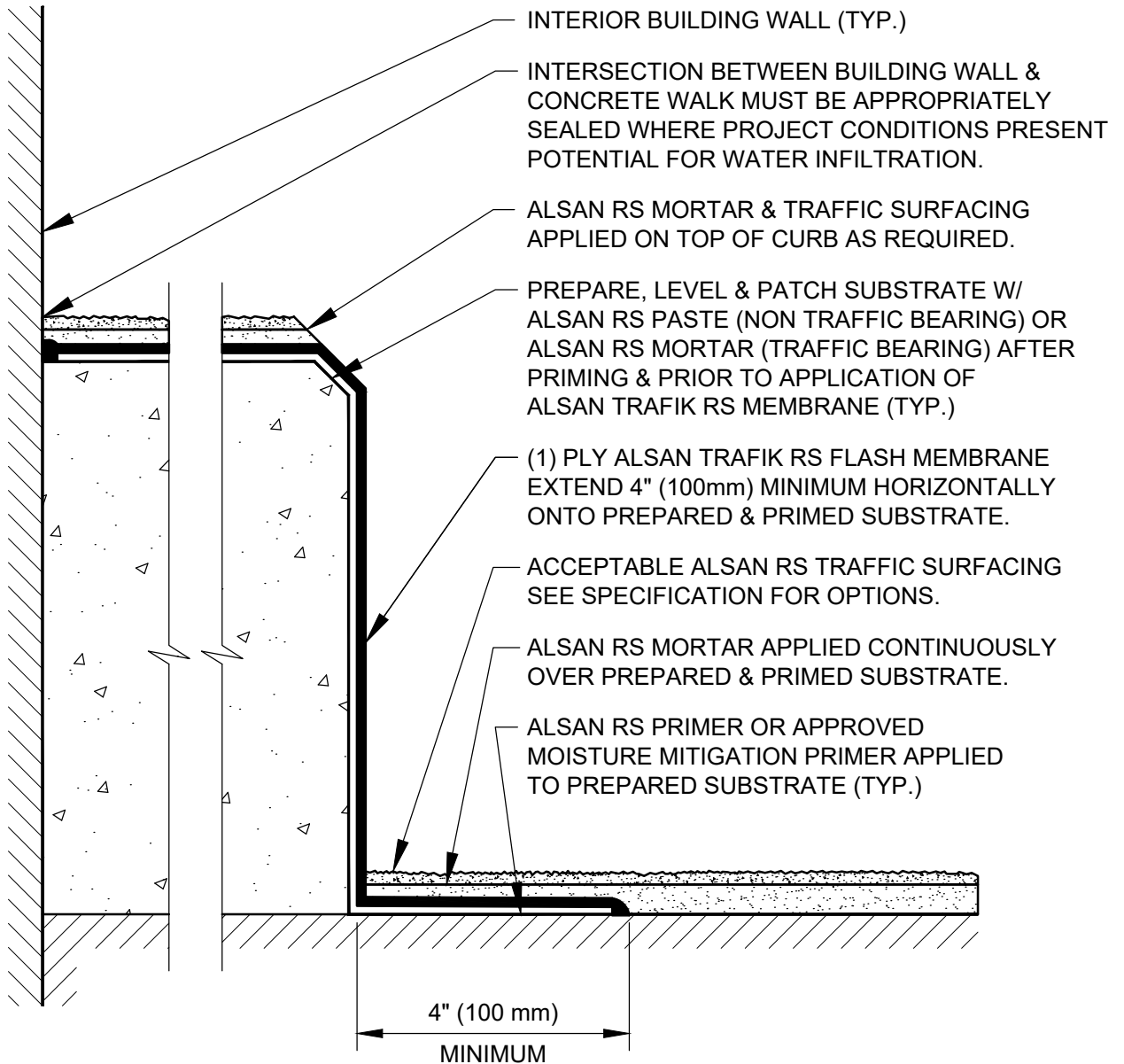


**NOTE:**

ALSAN TRAFIK RS FLASH MEMBRANE ON CURB IS SUBJECT TO MECHANICAL DAMAGE FROM VEHICLES & SHOULD BE PROTECTED USING BOLLARDS, STAND-OFFS, STEEL SKID PLATES OR OTHER MEANS AS NECESSARY.



SOPREMA DETAIL DRAWINGS: REFER TO SOPREMA AND OTHER RELATED PUBLISHED DOCUMENTATION, PRODUCT DATA SHEETS (PDS) AND SAFETY DATA SHEETS (SDS) FOR ADDITIONAL INFORMATION. ALL DETAIL DRAWINGS AND RELATED INSTALLATION GUIDELINES ARE PROVIDED BY SOPREMA FOR THE SOLE PURPOSE OF ISSUING A SOPREMA WARRANTY. ACCORDINGLY, THE DETAIL DRAWINGS ARE NOT OFFERED, AND SHOULD NOT BE CONSIDERED, AS A SUBSTITUTE FOR PROFESSIONAL DESIGN SERVICES.



US CORPORATE ADDRESS  
310 QUADRAL DRIVE  
WADSWORTH, OHIO 44281  
www.soprema.us  
Tel: 330.334.0066

PROJECT:

TITLE:

**ALSAN TRAFIK RS PARTIALLY REINFORCED  
WATERPROOFING & SURFACING  
GARAGE INTERIOR CURB/SIDEWALK**

DRAWN BY: SOPREMA TECHNICAL SUPPORT, DWALDRON

NO.:

REVISION:

DATE:

DATE: 1-15-2022

SCALE: NTS

DRAWING NUMBER:

**US.RTN.05.C02**