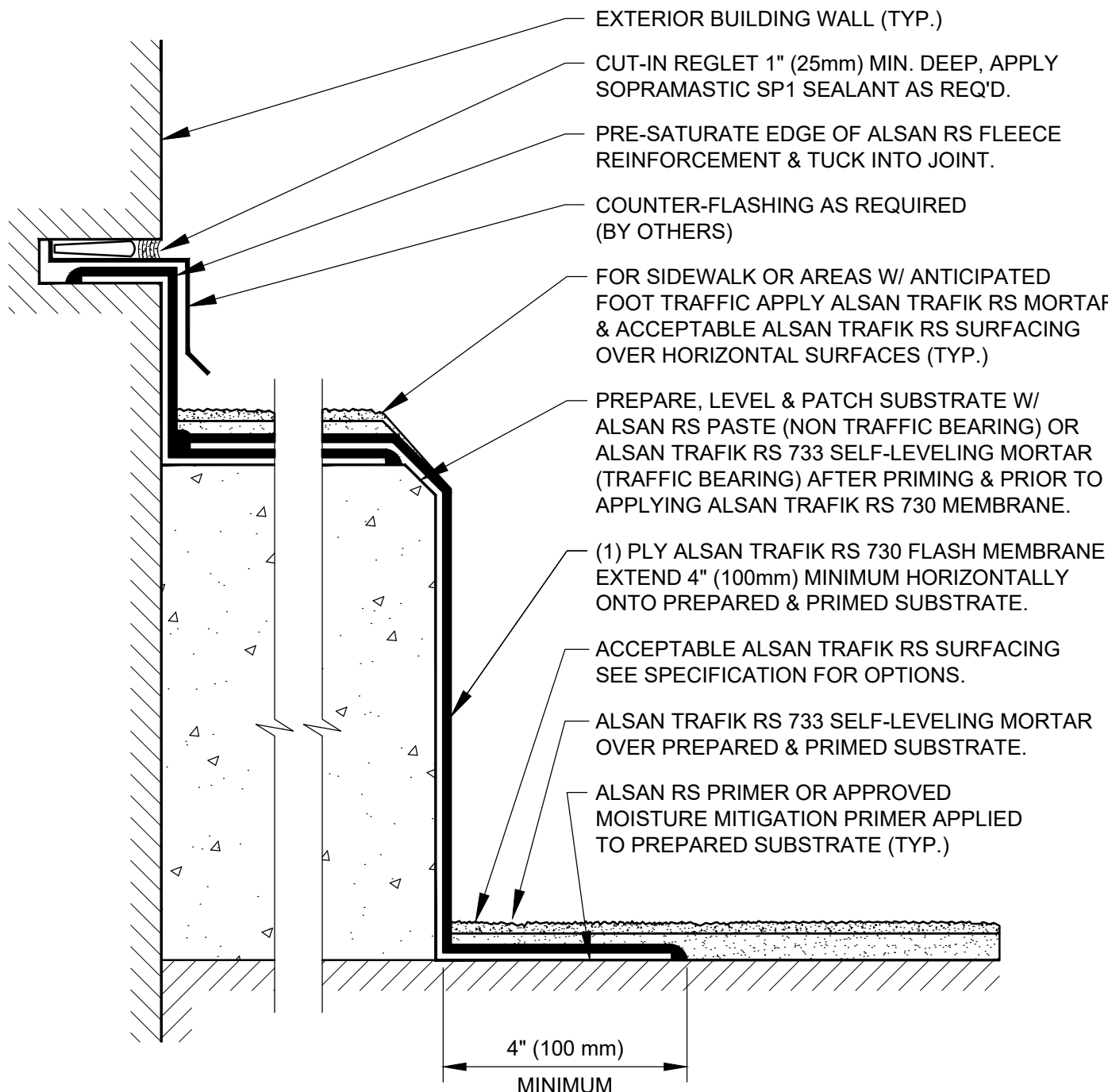


NOTE:
 ALSAN TRAFIK RS 730 FLASH MEMBRANE ON CURB
 IS SUBJECT TO MECHANICAL DAMAGE FROM
 VEHICLES & SHOULD BE PROTECTED USING
 BOLLARDS, STAND-OFFS, STEEL SKID PLATES
 OR OTHER MEANS AS NECESSARY.



SOPREMA DETAIL DRAWINGS: REFER TO SOPREMA AND OTHER RELATED PUBLISHED DOCUMENTATION, PRODUCT DATA SHEETS (PDS) AND SAFETY DATA SHEETS (SDS) FOR ADDITIONAL INFORMATION. ALL DETAIL DRAWINGS AND RELATED INSTALLATION GUIDELINES ARE PROVIDED BY SOPREMA FOR THE SOLE PURPOSE OF ISSUING A SOPREMA WARRANTY. ACCORDINGLY, THE DETAIL DRAWINGS ARE NOT OFFERED, AND SHOULD NOT BE CONSIDERED, AS A SUBSTITUTE FOR PROFESSIONAL DESIGN SERVICES.



US CORPORATE ADDRESS
 310 QUADRAL DRIVE
 WADSWORTH, OHIO 44281
www.soprema.us
 Tel: 330.334.0066

PROJECT:

TITLE:

**ALSAN TRAFIK RS PARTIALLY REINFORCED
 WATERPROOFING & SURFACING
 EXTERIOR CURB/SIDEWALK**

DRAWN BY: SOPREMA TECHNICAL SUPPORT, DWALDRON

NO.:

REVISION:

DATE:

DATE: 1-15-2024

SCALE: NTS

DRAWING NUMBER:

US.RTN.05.C03

USAGE OF THIS DETAIL IS GOVERNED BY THE TERMS OF SERVICE FOR SOPREMA DETAILS.
 PLEASE CONSULT THESE TERMS OF SERVICE PRIOR TO UTILIZING THIS DRAWING.