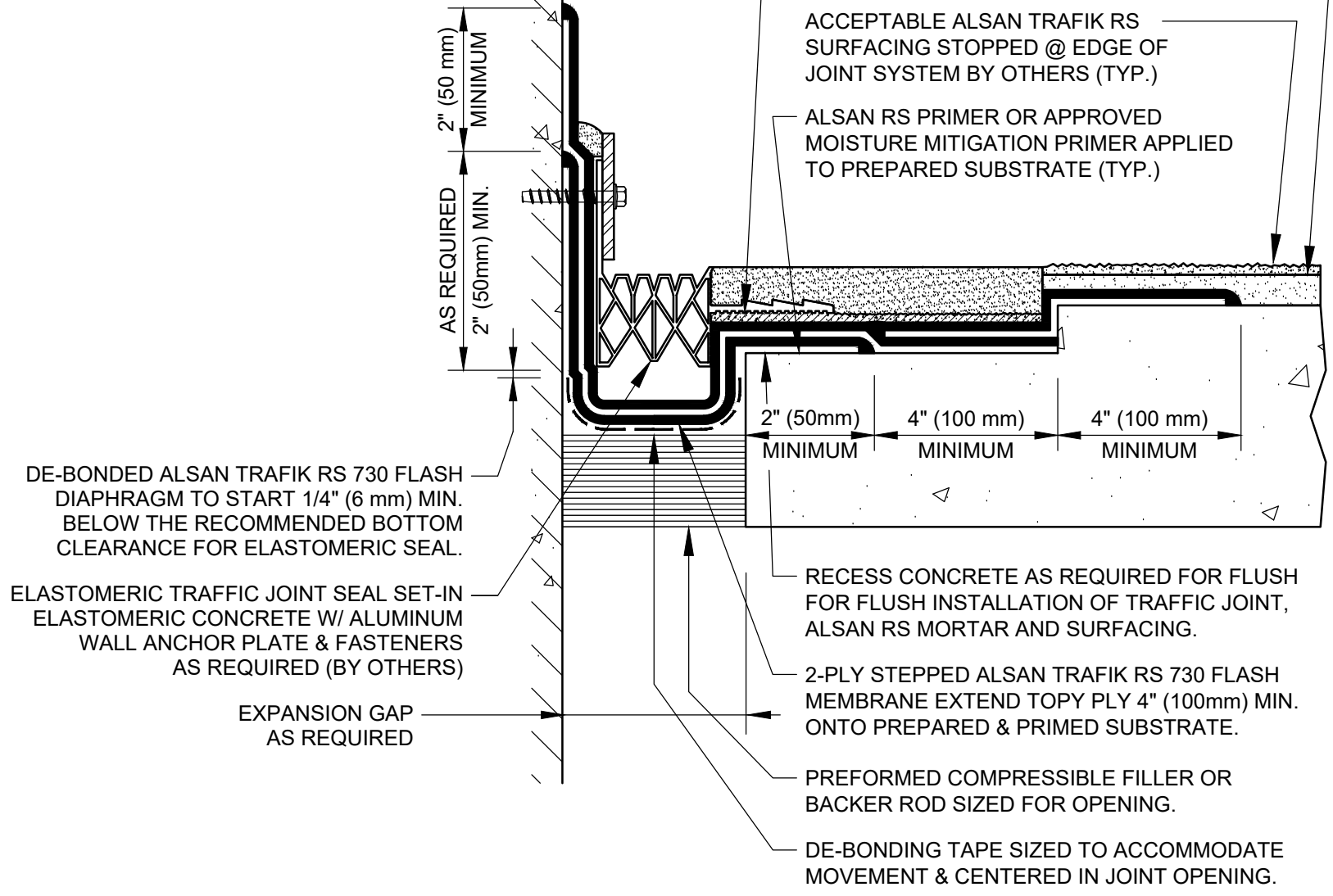



NOTE:
 SIZE WIDTH OF DE-BONDING TAPE TO PROVIDE UN-ADHERED AREA MINIMUM 5 TIMES LARGER THAN THE MAXIMUM ANTICIPATED EXPANSION. MEMBRANE COVER STRIP MUST EXTEND PAST DE-BONDING AS INDICATED BELOW (TYP.)



SOPREMA DETAIL DRAWINGS: REFER TO SOPREMA AND OTHER RELATED PUBLISHED DOCUMENTATION, PRODUCT DATA SHEETS (PDS) AND SAFETY DATA SHEETS (SDS) FOR ADDITIONAL INFORMATION. ALL DETAIL DRAWINGS AND RELATED INSTALLATION GUIDELINES ARE PROVIDED BY SOPREMA FOR THE SOLE PURPOSE OF ISSUING A SOPREMA WARRANTY. ACCORDINGLY, THE DETAIL DRAWINGS ARE NOT OFFERED, AND SHOULD NOT BE CONSIDERED, AS A SUBSTITUTE FOR PROFESSIONAL DESIGN SERVICES.

 <p>US CORPORATE ADDRESS 310 QUADRAL DRIVE WADSWORTH, OHIO 44281 www.soprema.us Tel: 330.334.0066</p>		PROJECT: TITLE: ALSAN TRAFIK RS PARTIALLY REINFORCED WATERPROOFING & SURFACING WALL GLAND JOINT SEAL (BY OTHERS)		DRAWN BY: SOPREMA TECHNICAL SUPPORT, DWALDRON NO.: REVISION: DATE: 1-15-2024 SCALE: NTS	
		DRAWING NUMBER: US.RTN.08.J02H			

USAGE OF THIS DETAIL IS GOVERNED BY THE TERMS OF SERVICE FOR SOPREMA DETAILS. PLEASE CONSULT THESE TERMS OF SERVICE PRIOR TO UTILIZING THIS DRAWING.