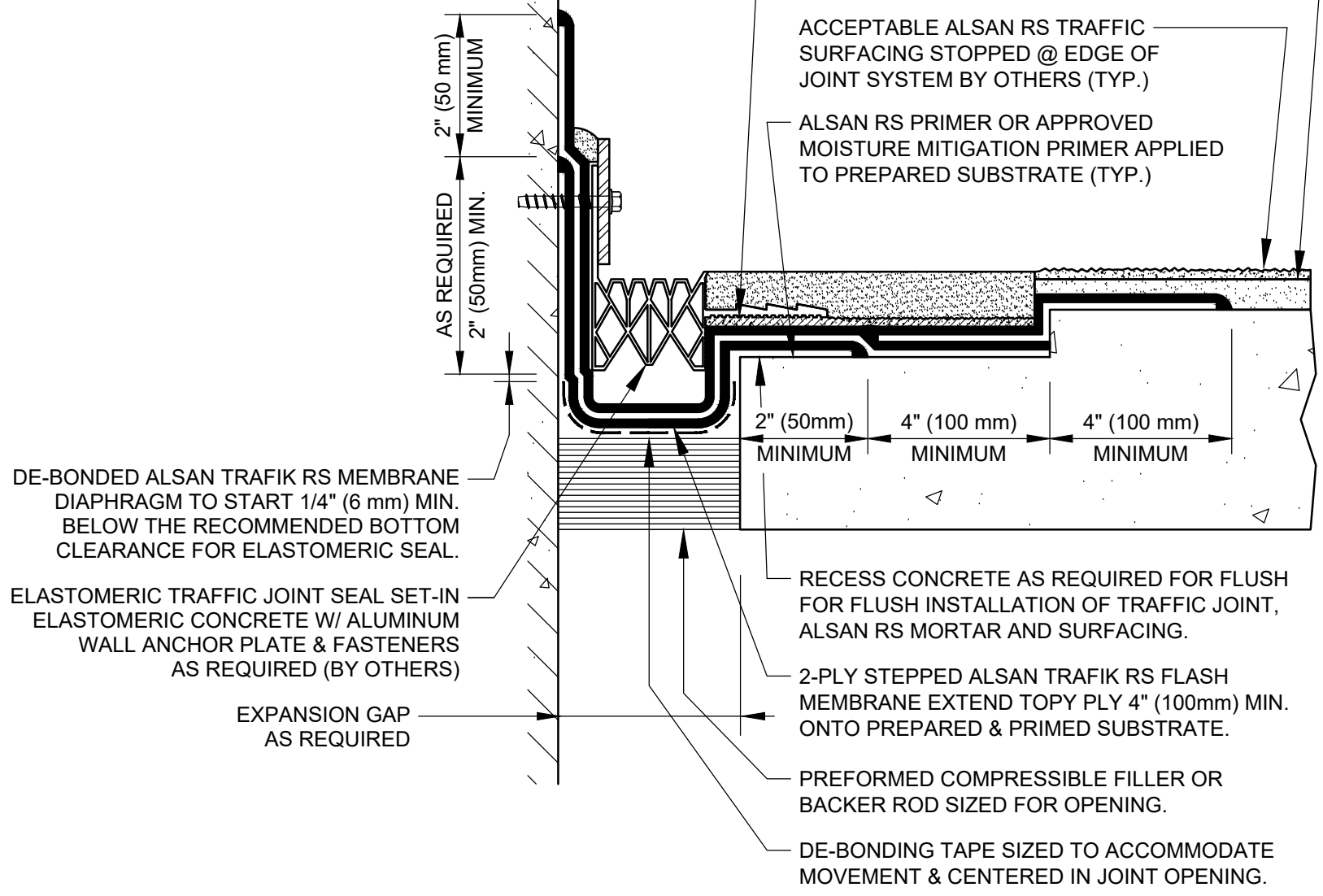


**NOTE:**  
 SIZE WIDTH OF DE-BONDING TAPE TO PROVIDE UN-ADHERED AREA MINIMUM 5 TIMES LARGER THAN THE MAXIMUM ANTICIPATED EXPANSION. MEMBRANE COVER STRIP MUST EXTEND PAST DE-BONDING AS INDICATED BELOW (TYP.)



SUPPLEMENTAL COAT OF ALSAN TRAFIK RS FLASH RESIN APPLIED W/ BROADCAST #1 KILN DRIED QUARTZ OVER MEMBRANE AS BONDING LAYER (IF REQUIRED)

ALSAN RS MORTAR APPLIED OVER ALSAN TRAFIK RS MEMBRANE. USE TEMPORARY PROTECTION AS REQUIRED TO KEEP MORTAR FROM FALLING INTO JOINT.

ACCEPTABLE ALSAN RS TRAFFIC SURFACING STOPPED @ EDGE OF JOINT SYSTEM BY OTHERS (TYP.)

ALSAN RS PRIMER OR APPROVED MOISTURE MITIGATION PRIMER APPLIED TO PREPARED SUBSTRATE (TYP.)

DE-BONDED ALSAN TRAFIK RS MEMBRANE DIAPHRAGM TO START 1/4" (6 mm) MIN. BELOW THE RECOMMENDED BOTTOM CLEARANCE FOR ELASTOMERIC SEAL.

ELASTOMERIC TRAFFIC JOINT SEAL SET-IN ELASTOMERIC CONCRETE W/ ALUMINUM WALL ANCHOR PLATE & FASTENERS AS REQUIRED (BY OTHERS)

EXPANSION GAP AS REQUIRED


RECESS CONCRETE AS REQUIRED FOR FLUSH FOR FLUSH INSTALLATION OF TRAFFIC JOINT, ALSAN RS MORTAR AND SURFACING.

2-PLY STEPPED ALSAN TRAFIK RS FLASH MEMBRANE EXTEND TOPY PLY 4" (100mm) MIN. ONTO PREPARED & PRIMED SUBSTRATE.

PREFORMED COMPRESSIBLE FILLER OR BACKER ROD SIZED FOR OPENING.

DE-BONDING TAPE SIZED TO ACCOMMODATE MOVEMENT & CENTERED IN JOINT OPENING.

SOPREMA DETAIL DRAWINGS: REFER TO SOPREMA AND OTHER RELATED PUBLISHED DOCUMENTATION, PRODUCT DATA SHEETS (PDS), AND SAFETY DATA SHEETS (SDS) FOR ADDITIONAL INFORMATION. ALL DETAIL DRAWINGS AND RELATED INSTALLATION GUIDELINES ARE PROVIDED BY SOPREMA FOR THE SOLE PURPOSE OF ISSUING A SOPREMA WARRANTY. ACCORDINGLY, THE DETAIL DRAWINGS ARE NOT OFFERED, AND SHOULD NOT BE CONSIDERED, AS A SUBSTITUTE FOR PROFESSIONAL DESIGN SERVICES.

DRAWN BY: SOPREMA TECHNICAL SUPPORT, DWALDRON		DATE:	
NO.:	REVISION:	DATE:	
PROJECT:		DATE: 1-15-2022	DRAWING NUMBER: US.RTN.08.J02H
TITLE: <b>ALSAN TRAFIK RS PARTIALLY REINFORCED WATERPROOFING &amp; SURFACING WALL GLAND JOINT SEAL (BY OTHERS)</b>		SCALE: NTS	
		US CORPORATE ADDRESS 310 QUADRAL DRIVE WADSWORTH, OHIO 44281 <a href="http://www.soprema.us">www.soprema.us</a> Tel: 330.334.0066	

USAGE OF THIS DETAIL IS GOVERNED BY THE TERMS OF SERVICE FOR SOPREMA DETAILS. PLEASE CONSULT THESE TERMS OF SERVICE PRIOR TO UTILIZING THIS DRAWING.