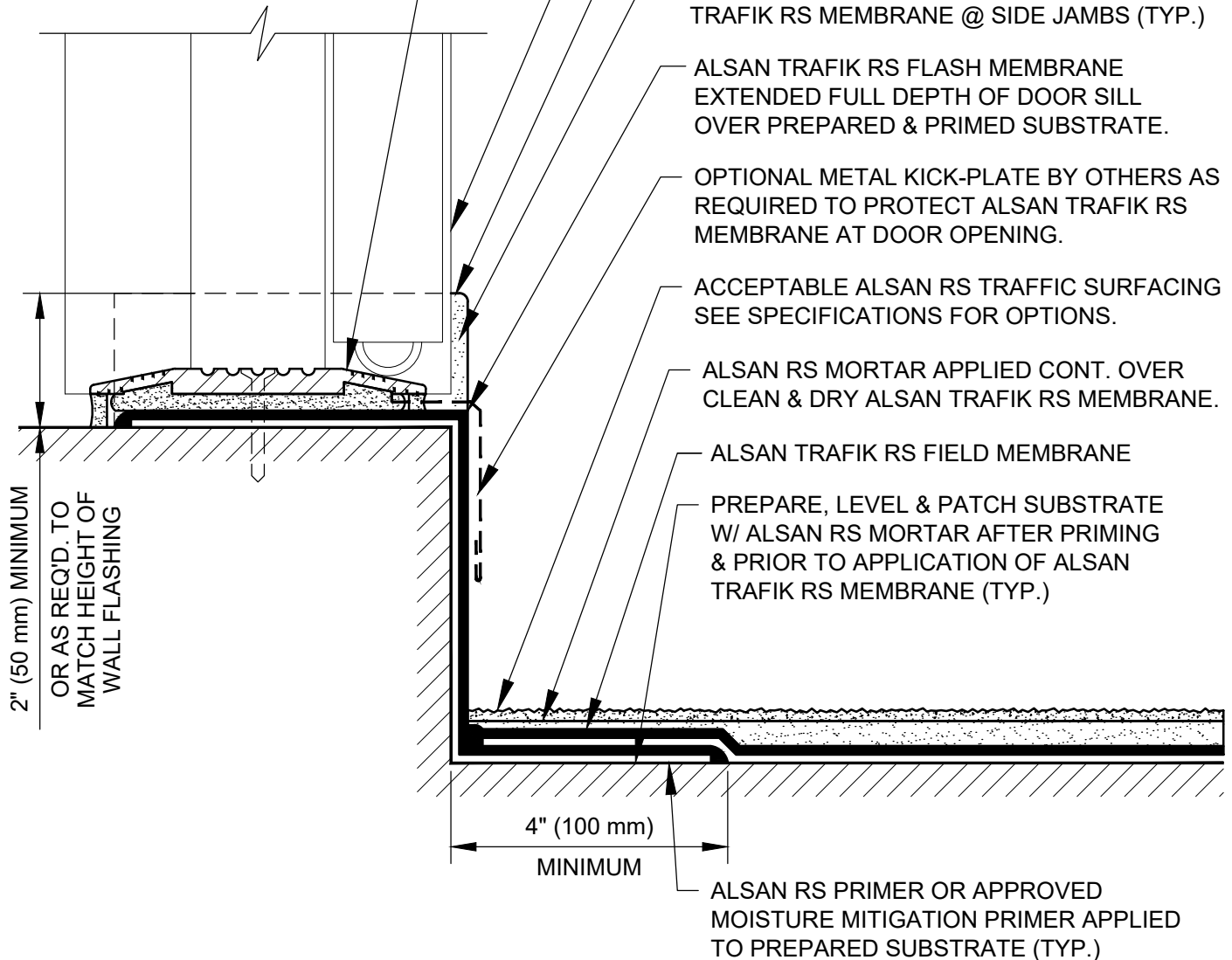


FRONT VIEW



SOPREMA DETAIL DRAWINGS: REFER TO SOPREMA AND OTHER RELATED PUBLISHED DOCUMENTATION, PRODUCT DATA SHEETS (PDS) AND SAFETY DATA SHEETS (SDS) FOR ADDITIONAL INFORMATION. ALL DETAIL DRAWINGS AND RELATED INSTALLATION GUIDELINES ARE PROVIDED BY SOPREMA FOR THE SOLE PURPOSE OF ISSUING A SOPREMA WARRANTY. ACCORDINGLY, THE DETAIL DRAWINGS ARE NOT OFFERED, AND SHOULD NOT BE CONSIDERED, AS A SUBSTITUTE FOR PROFESSIONAL DESIGN SERVICES.



US CORPORATE ADDRESS
310 QUADRAL DRIVE
WADSWORTH, OHIO 44281
www.soprema.us
Tel: 330.334.0066

PROJECT:

TITLE:

**ALSAN TRAFIK RS FULLY REINFORCED
WATERPROOFING & SURFACING
RAISED DOOR SILL FLASHING**

DRAWN BY: SOPREMA TECHNICAL SUPPORT, DWALDRON

NO.:

REVISION:

DATE:

DATE: 1-15-2022

DRAWING NUMBER:

US.RTR.02.M02A

SCALE: NTS