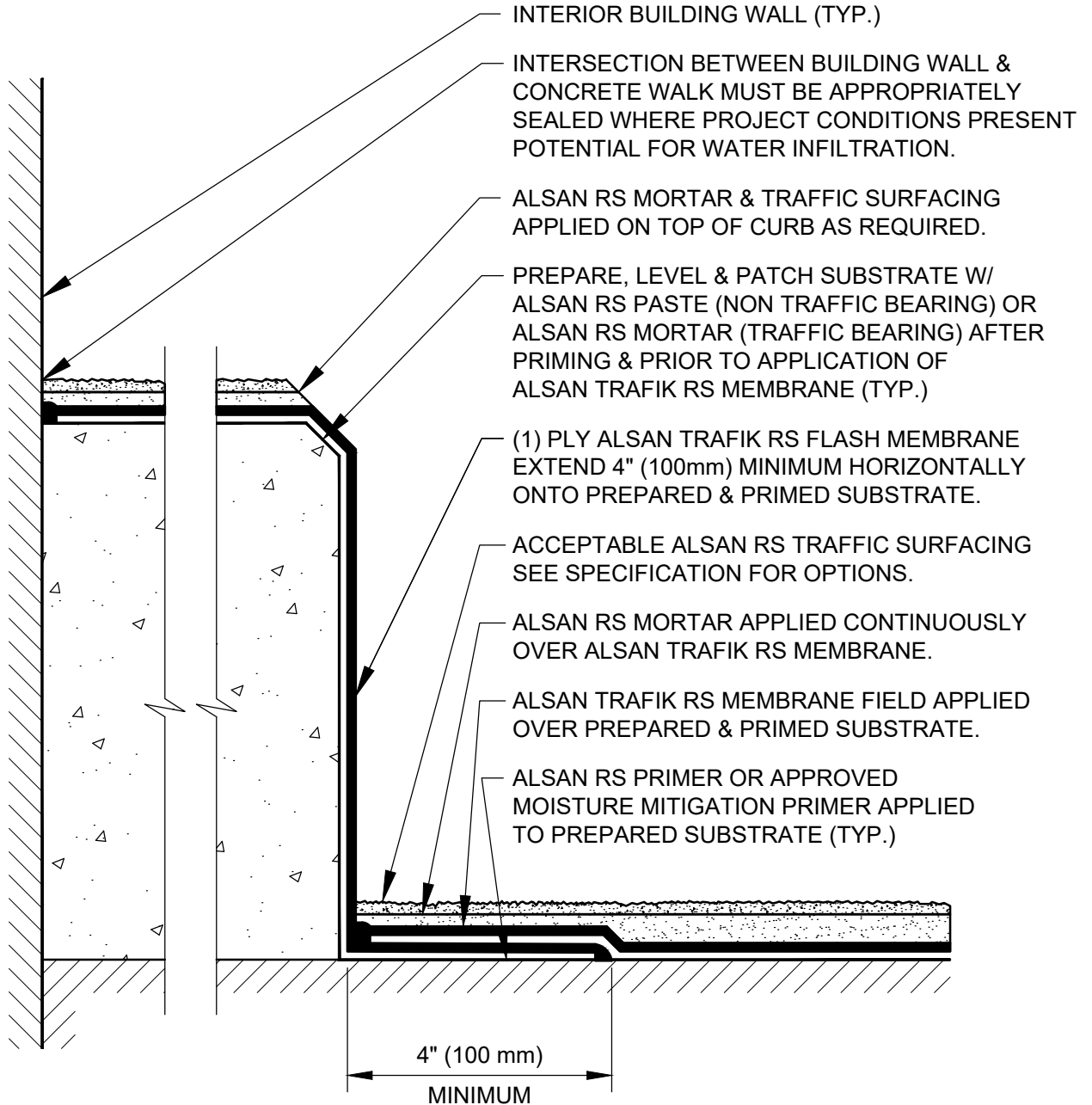


NOTE:

ALSAN TRAFIK RS FLASH MEMBRANE @ CURB IS SUBJECT TO MECHANICAL DAMAGE FROM VEHICLES & SHOULD BE PROTECTED USING BOLLARDS, STAND-OFFS, STEEL SKID PLATES OR OTHER MEANS AS NECESSARY.



SOPREMA DETAIL DRAWINGS: REFER TO SOPREMA AND OTHER RELATED PUBLISHED DOCUMENTATION, PRODUCT DATA SHEETS (PDS) AND SAFETY DATA SHEETS (SDS) FOR ADDITIONAL INFORMATION. ALL DETAIL DRAWINGS AND RELATED INSTALLATION GUIDELINES ARE PROVIDED BY SOPREMA FOR THE SOLE PURPOSE OF ISSUING A SOPREMA WARRANTY. ACCORDINGLY, THE DETAIL DRAWINGS ARE NOT OFFERED, AND SHOULD NOT BE CONSIDERED, AS A SUBSTITUTE FOR PROFESSIONAL DESIGN SERVICES.



US CORPORATE ADDRESS
310 QUADRAL DRIVE
WADSWORTH, OHIO 44281
www.soprema.us
Tel: 330.334.0066

PROJECT:

TITLE:

**ALSAN TRAFIK RS FULLY REINFORCED
WATERPROOFING & SURFACING
GARAGE INTERIOR CURB/SIDEWALK**

DRAWN BY: SOPREMA TECHNICAL SUPPORT, DWALDRON

NO.:

REVISION:

DATE:

DATE: 1-15-2022

DRAWING NUMBER:

US.RTR.05.C02

SCALE: NTS

USAGE OF THIS DETAIL IS GOVERNED BY THE TERMS OF SERVICE FOR SOPREMA DETAILS.
PLEASE CONSULT THESE TERMS OF SERVICE PRIOR TO UTILIZING THIS DRAWING.