

# ALSAN<sup>®</sup> TRAFIK RS

## WATERPROOFING





# ALSAN<sup>®</sup> TRAFIK RS

---

ALSAN TRAFIK RS offers a complete range of high performance, flexible, seamless, polyester reinforced liquid applied polymeric waterproofing products. ALSAN TRAFIK RS is composed of polymethyl methacrylate (PMMA) based resins that offer rapid set times and results in a tough and durable trafficable surface.

ALSAN TRAFIK RS 730 resins are used in combination with ALSAN RS Fleece and a variety of surfacing options to create a seamless, watertight, puncture resistant, fully reinforced field and flashing system.

## ADVANTAGES

- Stands up to the toughest torsional strains including turning wheels
- VOC compliant
- Highly water-resistant
- Resistant to UV damage
- Resistant to vehicular fluids



## ALSAN TRAFIK RS PARKING SYSTEMS TRAFFICABLE COMPONENTS\*

### FULLY-REINFORCED SYSTEM

**ALSAN TRAFIK RS 730 Flash** – High-performance, rapid-setting, polymethyl methacrylate (PMMA) liquid resin for use in flashing applications

**ALSAN TRAFIK RS 730 Field** – High-performance, rapid-setting, polymethyl methacrylate (PMMA) liquid waterproofing resin that, when combined with ALSAN RS Fleece, forms a waterproof membrane

### FINISH/SEALER TOPCOAT RESINS

**ALSAN TRAFIK RS 781 CL** – Rapid-setting clear finish resin designed to be used as a sealer coat when colored silica quartz aggregate or pigmented polymer flakes are utilized

**ALSAN TRAFIK RS 787 CF** – Rapid-setting liquid resin that is un-pigmented and is to be mixed with a color additive for a colored finish or line striping

**ALSAN TRAFIK RS 789 LT** – Rapid-setting liquid resin, premixed with light-texture aggregate and combined with a color additive to give a light-duty, non-slip color finish

**ALSAN TRAFIK RS 790 HT** – Rapid-setting liquid resin, premixed with heavy-texture aggregate and combined with a color additive for a highly-trafficable finish coat

### PRIMER

**ALSAN RS 276 Primer** – Rapid-setting, proprietary-formulation polymethyl methacrylate (PMMA) primer utilized to promote adhesion over concrete, masonry, and other substrates prior to application of ALSAN RS roofing, waterproofing and flashing systems

### MORTAR

**ALSAN TRAFIK RS 733 Self-Leveling Mortar** – Rapid-setting, flexible mortar for impact resistance applied over ALSAN TRAFIK RS 730 membranes or 276 Primer, and is created by combining ALSAN TRAFIK RS 733 Part A (resin) and ALSAN TRAFIK RS 733 Part B (filler)

### RELATED PRODUCTS

**ALSAN RS Catalyst Powder** – Curing agent used to induce curing process

**ALSAN RS Fleece** – Polyester-based reinforcement used with all membrane resins

**ALSAN RS Quartz Aggregate** – Mineral surfacing used to achieve an aesthetic finish, bond/wearing layer and/or non-skid wearing surface

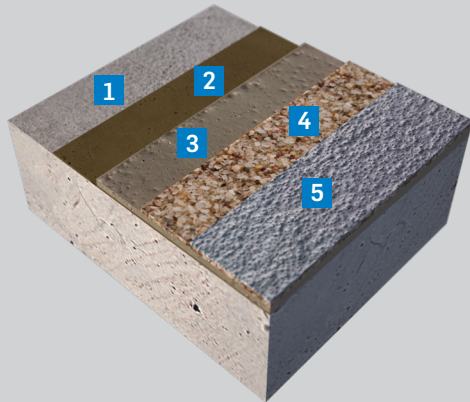
**ALSAN RS Vinyl Chips** – Flat, angular pigmented polymer flakes used as a decorative medium

**ALSAN RS Color Additive** – Colored additive intended to be mixed into a liquid PMMA resin

\*All components of ALSAN RS systems are sold separately. Contact SOPREMA Technical Support for specific assembly option and warranty information.

## ALSAN TRAFIK RS SYSTEMS

### PARTIALLY-REINFORCED TRAFFICABLE SYSTEM



- 1 Prepared concrete
- 2 ALSAN RS 276 Primer
- 3 ALSAN TRAFIK RS 733 Self-Leveling Mortar
- 4 ALSAN RS Quartz
- 5 ALSAN TRAFIK RS 781 CL or ALSAN TRAFIK RS 787 CF

#### Optional Finish:

ALSAN TRAFIK RS 789 LT or 790 HT can be used to replace steps 4 & 5

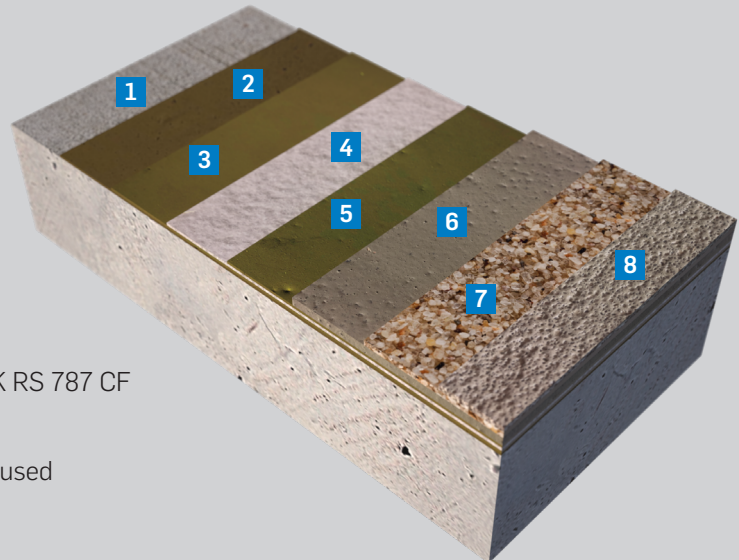
\*Multiple surfacing options available

### FULLY-REINFORCED TRAFFICABLE SYSTEMS

- 1 Prepared concrete
- 2 ALSAN RS 276 Primer
- 3 ALSAN TRAFIK RS 730
- 4 ALSAN RS Fleece
- 5 ALSAN TRAFIK RS 730
- 6 ALSAN TRAFIK RS 733 Self-Leveling Mortar
- 7 ALSAN RS Quartz
- 8 ALSAN TRAFIK RS 781 CL or ALSAN TRAFIK RS 787 CF

#### Optional Finish:

ALSAN TRAFIK RS 789 LT or 790 HT can be used to replace steps 7 & 8



## SURFACE & FINISH OPTIONS AVAILABLE

- ALSAN TRAFIK RS 790 HT is recommended for turning radius, high or heavy-duty traffic areas and ramps
- ALSAN TRAFIK RS 789 LT may be used in areas with light-duty traffic or pedestrian areas



# SUSTAINABILITY

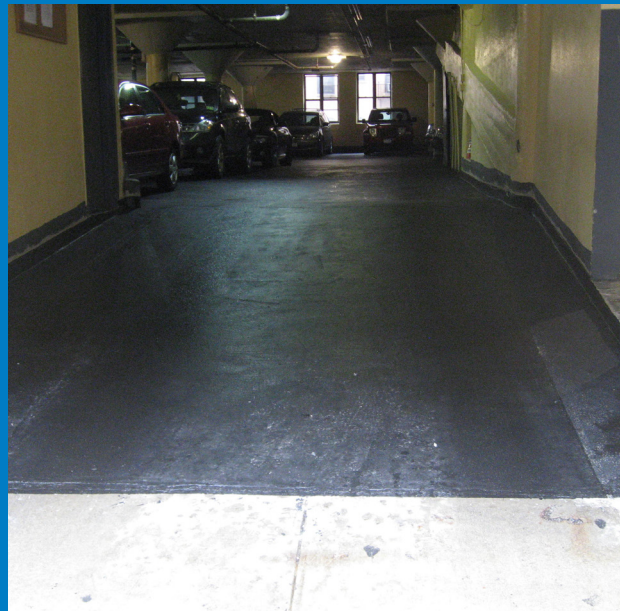
SHOREFRONT TOWERS, BROOKLYN, NY

Contractor: Victoria Restoration



NYP WEILL CORNELL UNIVERSITY  
HOSPITAL, NEW YORK, NY

Contractor: DNA Restoration



## INNOVATION SINCE 1908

---

SOPREMA has developed around the idea that the quality, durability and reliability of materials must match builders' ambitions and expectations. For more than 100 years, SOPREMA has been using its expertise to develop a variety of high-end products that meet or exceed all the requirements of the construction field.

### ROOFING WATERPROOFING WALLS CIVIL ENGINEERING



---

SOPREMA is an international manufacturer specializing in the production of waterproofing and insulation products, as well as vegetative and soundproofing solutions, for the building and civil engineering sectors.

---

SOPREMA.US • 1.800.356.3521

SOPREMA.CA • 1.877.MAMMOUTH

---